

Cytokeratin 13 (ABT057) IHC kit

CatalogNo: IHCM6043

Key Features

Host Species

- Mouse

Reactivity

- Human,

Applications

- IHC

Isotype

- IgG1,Kappa

Recommended Dilution Ratios

Storage

Storage* 2°C to 8°C/1 year

Basic Information

Clonality Monoclonal

Clone Number ABT057

Immunogen Information

Immunogen Synthesized peptide derived from human Cytokeratin 13 AA range: 400-458

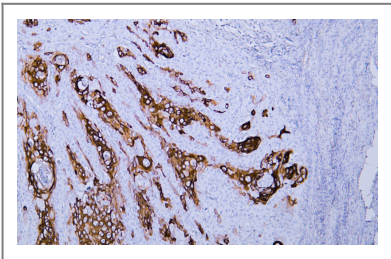
Specificity The antibody can specifically recognize human CK13 protein.

Target Information

Gene name KRT13

Protein Name	47 kDa cytokeratin;CK-13;CK13;Cytokeratin 13;Cytokeratin-13;K13;K1C13_HUMAN;Ka13;Keratin 13;Keratin;keratin type I cytoskeletal 13;Keratin-13;Krt-1.13;Krt1-13;KRT13;MGC161462;MGC3781;type I cytoskeletal 13;Type I keratin Ka13;WSN2		
	Organism	Gene ID	UniProt ID
	Human	3860;	P13646;
	Mouse		P08730;
	Rat		Q6IFV4;
Cellular Localization	Cytoplasmic, Membranous		
Tissue specificity	Tonsil		
Function	Disease:Defects in KRT13 are a cause of white sponge nevus of cannon (WSN) [MIM:193900]. WSN is a rare autosomal dominant disorder which predominantly affects non-cornified stratified squamous epithelia. Clinically, it is characterized by the presence of soft, white, and spongy plaques in the oral mucosa. The characteristic histopathologic features are epithelial thickening, parakeratosis, and vacuolization of the suprabasal layer of oral epithelial keratinocytes. Less frequently the mucous membranes of the nose, esophagus, genitalia and rectum are involved.,miscellaneous:There are two types of cytoskeletal and microfibrillar keratin: I (acidic; 40-55 kDa) and II (neutral to basic; 56-70 kDa).,online information:Keratin-13 entry,PTM:O-glycosylated; glycans consist of single N-acetylglucosamine residues.,similarity:Belongs to the intermediate filament family.,subunit:Heterotetramer of two type I and two type II keratins. keratin-13 is generally associated with keratin-4.,tissue specificity:Expressed in some epidermal sweat gland ducts (at protein level) and in exocervix, esophagus and placenta.,		

| Validation Data



Human cervical squamous cell carcinoma tissue was stained with Anti-Cytokeratin 13 (ABT057) Antibody

| Contact information

Orders: order@immunoway.com
 Support: tech@immunoway.com
 Telephone: 877-594-3616 (Toll Free), 408-747-0185
 Website: <http://www.immunoway.com>
 Address: 2200 Ringwood Ave San Jose, CA 95131 USA



Please scan the QR code to access additional product information:
Cytokeratin 13 (ABT057) IHC kit

