

## Multi-color Prestained Protein Marker(10-180KDa)

CatalogNo: D02250

### | Key Features

---

#### Applications

- WB,SDS-PAGE
- 

### | Recommended Dilution Ratios

Ready to use

### | Storage

**Storage\*** -20°C,Ship by ice bag

### | Basic Information

### | Immunogen Information

---

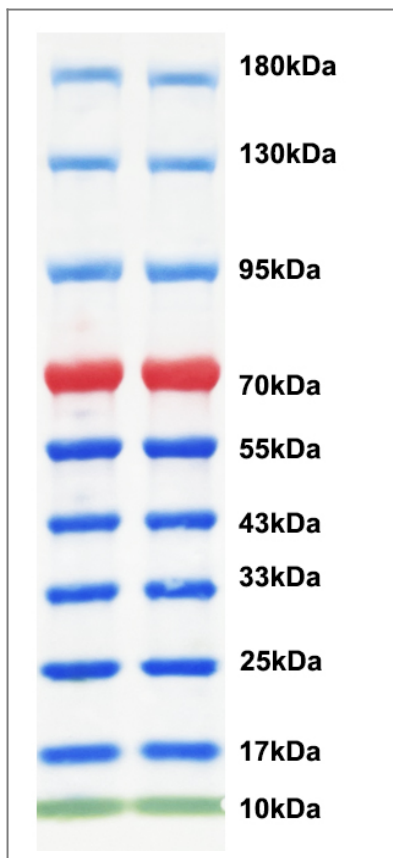
### | Target Information

**Protein Name**

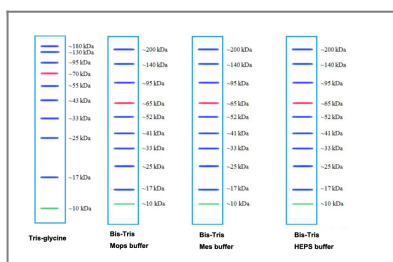
---

### | Validation Data

Tris-glycine电泳体系示意图，每孔4微升上样。



蛋白marker在不同电泳缓冲体系中的迁移示意图



## Contact information

Orders: [order@immunoway.com](mailto:order@immunoway.com)  
 Support: [tech@immunoway.com](mailto:tech@immunoway.com)  
 Telephone: 877-594-3616 (Toll Free), 408-747-0185  
 Website: <http://www.immunoway.com>  
 Address: 2200 Ringwood Ave San Jose, CA 95131 USA



Please scan the QR code to access additional product information:  
**Multi-color  
 Prestained Protein  
 Marker(10-180kDa)**

For Research Use Only. Not for Use in Diagnostic Procedures.

[Antibody](#) | [ELISA Kits](#) | [Protein](#) | [Reagents](#)