

## PP2B-A $\alpha$ Rabbit pAb

CatalogNo: YT7821

### Key Features

#### Host Species

- Rabbit

#### Reactivity

- Human, Mouse, Rat

#### Applications

- WB, IHC

#### MW

- 57kD (Calculated)

#### Isotype

- IgG

### Recommended Dilution Ratios

WB 1:500-2000

IHC 1:50-300

### Storage

**Storage\*** -15°C to -25°C/1 year (Do not lower than -25°C)

**Formulation** Liquid in PBS containing 50% glycerol, 0.5% BSA and 0.02% sodium azide.

### Basic Information

**Clonality** Polyclonal

### Immunogen Information

**Immunogen** Synthesized peptide derived from human PP2B-A $\alpha$

**Specificity** This antibody detects endogenous levels of Human, Mouse, Rat PP2B-A $\alpha$

### Target Information

**Gene name** PPP3CA CALNA CNA

**Protein Name** PP2B-A $\alpha$

Organism	Gene ID	UniProt ID
Human	<a href="#">5530</a> ;	<a href="#">Q08209</a> ;
Mouse	<a href="#">19055</a> ;	<a href="#">P63328</a> ;
Rat	<a href="#">24674</a> ;	<a href="#">P63329</a> ;

**Cellular Localization**

Cytoplasm . Cell membrane ; Peripheral membrane protein . Cell membrane, sarcolemma . Cytoplasm, myofibril, sarcomere, Z line . Cell projection, dendritic spine . Colocalizes with ACTN1 and MYOZ2 at the Z line in heart and skeletal muscle (By similarity). Recruited to the cell membrane by scaffold protein AKAP5 following L-type Ca(2+)-channel activation (PubMed:22343722). .

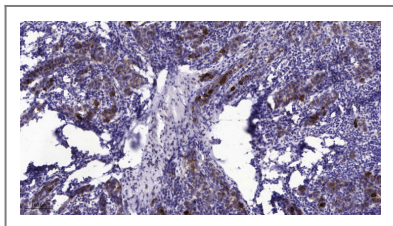
**Tissue specificity**

Expressed in keratinocytes (at protein level) (PubMed:29043977). Expressed in lymphoblasts (at protein level) (PubMed:30254215).

**Function**

Catalytic activity:A phosphoprotein + H(2)O = a protein + phosphate.,cofactor:Binds 1 Fe(3+) ion per subunit.,cofactor:Binds 1 zinc ion per subunit.,Function:Calcium-dependent, calmodulin-stimulated protein phosphatase. This subunit may have a role in the calmodulin activation of calcineurin. Dephosphorylates HSPB1 and SSH1.,online information:Calcineurin entry,similarity:Belongs to the PPP phosphatase family.,similarity:Belongs to the PPP phosphatase family. PP-2B subfamily.,subcellular location:Colocalizes with ACTN1 and MYOZ2 at the Z line in heart and skeletal muscle.,subunit:Composed of two components (A and B), the A component is the catalytic subunit and the B component confers calcium sensitivity. Interacts with TORC2/CRTC2, MYOZ1, MYOZ2 and MYOZ3.,

## Validation Data



Immunohistochemical analysis of paraffin-embedded human Breast cancer. 1, Antibody was diluted at 1:200(4° overnight). 2, Tris-EDTA,pH9.0 was used for antigen retrieval. 3,Secondary antibody was diluted at 1:200(room temperature, 45min).

## Contact information

Orders: [order@immunoway.com](mailto:order@immunoway.com)  
Support: [tech@immunoway.com](mailto:tech@immunoway.com)  
Telephone: 877-594-3616 (Toll Free), 408-747-0185  
Website: <http://www.immunoway.com>  
Address: 2200 Ringwood Ave San Jose, CA 95131 USA



Please scan the QR code to access additional product information:  
**PP2B-A $\alpha$  Rabbit pAb**

