

SYFM Rabbit pAb

CatalogNo: YT7709

Key Features

Host Species

- Rabbit

Reactivity

- Human, Mouse, Rat

Applications

- WB, ELISA, IHC

MW

- 50kD (Calculated)

Isotype

- IgG

Storage

Storage* -15°C to -25°C/1 year (Do not lower than -25°C)

Formulation Liquid in PBS containing 50% glycerol, 0.5% BSA and 0.02% sodium azide.

Recommended Dilution Ratios

WB 1:500-2000

IHC 1:50-300

ELISA 1:2000-20000

Basic Information

Clonality Polyclonal

Immunogen Information

Immunogen Synthesized peptide derived from human SYFM AA range: 294-344

Specificity This antibody detects endogenous levels of SYFM at Human/Mouse/Rat

Target Information

Gene name FARS2 FARS1 HSPC320

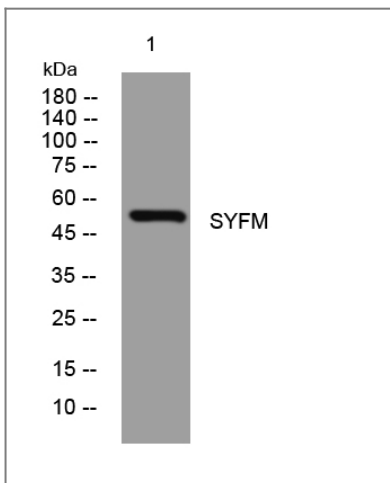
Protein Name SYFM

Organism	Gene ID	UniProt ID
Human	10667;	O95363;
Mouse	69955;	Q99M01;
Rat	306879;	Q6AYQ3;

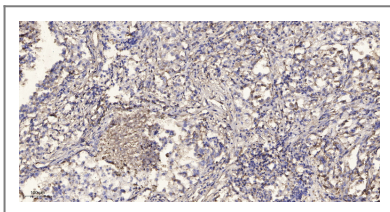
Cellular Localization Mitochondrion matrix . Mitochondrion .

Function Catalytic activity:ATP + L-phenylalanine + tRNA(Phe) = AMP + diphosphate + L-phenylalanyl-tRNA(Phe).,similarity:Belongs to the class-II aminoacyl-tRNA synthetase family.,similarity:Contains 1 FDX-ACB domain.,subunit:Monomer.,

Validation Data



Western blot analysis of lysates from HeLa cells, primary antibody was diluted at 1:1000, 4° overnight



Immunohistochemical analysis of paraffin-embedded human Squamous cell carcinoma of lung. 1, Antibody was diluted at 1:200(4° overnight). 2, Tris-EDTA,pH9.0 was used for antigen retrieval. 3,Secondary antibody was diluted at 1:200(room temperature, 45min).

Contact information

Orders: order@immunoway.com
Support: tech@immunoway.com
Telephone: 877-594-3616 (Toll Free), 408-747-0185
Website: <http://www.immunoway.com>
Address: 2200 Ringwood Ave San Jose, CA 95131 USA



Please scan the QR code to access additional product information:
SYFM Rabbit pAb

