

## ADCY5 Rabbit pAb

CatalogNo: YT7441

### | Key Features

#### Host Species

- Rabbit

#### Reactivity

- Human, Mouse, Rat

#### Applications

- WB

#### MW

- 139kD (Calculated)

#### Isotype

- IgG

### | Recommended Dilution Ratios

WB 1:500-2000

### | Storage

#### Storage\*

-15°C to -25°C/1 year (Do not lower than -25°C)

#### Formulation

Liquid in PBS containing 50% glycerol, 0.5% BSA and 0.02% sodium azide.

### | Basic Information

#### Clonality

Polyclonal

### | Immunogen Information

#### Immunogen

Synthesized peptide derived from human ADCY5 AA range: 471-521

#### Specificity

This antibody detects endogenous levels of ADCY5 at Human/Mouse/Rat

### | Target Information

#### Gene name

ADCY5

Protein Name ADCY5

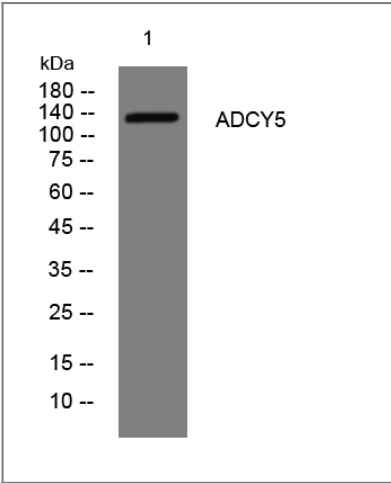
Organism	Gene ID	UniProt ID
Human	<a href="#">111</a> ;	<a href="#">O95622</a> ;
Mouse	<a href="#">224129</a> ;	<a href="#">P84309</a> ;
Rat	<a href="#">64532</a> ;	<a href="#">Q04400</a> ;

**Cellular Localization** Cell membrane ; Multi-pass membrane protein. Cell projection, cilium .

**Tissue specificity** Detected in pancreas islets (at protein level). Detected in pancreas islets.

**Function** Catalytic activity:ATP = 3',5'-cyclic AMP + diphosphate.,cofactor:Binds 2 magnesium ions per subunit.,enzyme regulation:Inhibition by calcium in the submicromolar concentration range.,Function:This is a membrane-bound, calcium-inhibitable adenylyl cyclase.,similarity:Belongs to the adenylyl cyclase class-4/guanylyl cyclase family.,similarity:Contains 2 guanylate cyclase domains.,

Validation Data



Western blot analysis of lysates from A431 cells, primary antibody was diluted at 1:1000, 4°over night

Contact information

Orders: order@immunoway.com  
Support: tech@immunoway.com  
Telephone: 877-594-3616 (Toll Free), 408-747-0185  
Website: http://www.immunoway.com  
Address: 2200 Ringwood Ave San Jose, CA 95131 USA



Please scan the QR code to access additional product information:  
**ADCY5 Rabbit pAb**

