

LRRC3 Rabbit pAb

CatalogNo: YT7392

Key Features

Host Species

- Rabbit

Reactivity

- Human, Mouse, Rat

Applications

- WB, IHC

MW

- 28kD (Calculated)

Isotype

- IgG

Recommended Dilution Ratios

WB 1:500-2000

IHC 1:50-300

Storage

Storage* -15°C to -25°C/1 year (Do not lower than -25°C)

Formulation Liquid in PBS containing 50% glycerol, 0.5% BSA and 0.02% sodium azide.

Basic Information

Clonality Polyclonal

Immunogen Information

Immunogen Synthesized peptide derived from human LRRC3 AA range: 110-160

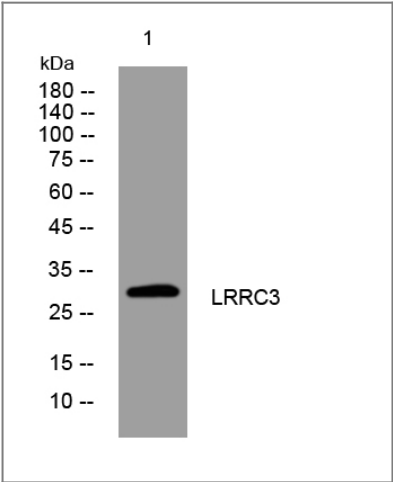
Specificity This antibody detects endogenous levels of LRRC3 at Human/Mouse/Rat

Target Information

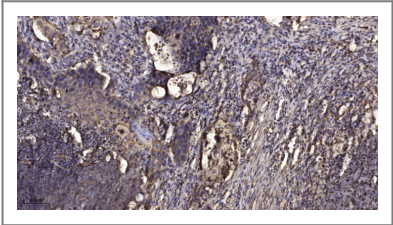
Gene name LRRC3 C21orf102 LRRC3A UNQ9233/PRO31982

Protein Name	LRRC3		
	Organism	Gene ID	UniProt ID
	Human	81543 ;	Q9BY71 ;
	Mouse	237387 ;	P59034 ;
	Rat	246773 ;	P59035 ;
Cellular Localization	Membrane ; Single-pass membrane protein .		
Tissue specificity	Widely expressed; detected in testis, lung, small intestine, breast, brain, heart, bone marrow, placenta, colon, fetal brain, liver, fetal liver, thymus, salivary gland, spinal cord, spleen, trachea and adrenal gland.		
Function	similarity:Belongs to the LRRC3 family.,similarity:Contains 3 LRR (leucine-rich) repeats.,tissue specificity:Widely expressed; detected in testis, lung, small intestine, breast, brain, heart, bone marrow, placenta, colon, fetal brain, liver, fetal liver, thymus, salivary gland, spinal cord, spleen, trachea and adrenal gland.,		

| Validation Data



Western blot analysis of lysates from SH-SY5Y cells, primary antibody was diluted at 1:1000, 4°over night



Immunohistochemical analysis of paraffin-embedded human Squamous cell carcinoma of lung. 1, Antibody was diluted at 1:200(4° overnight). 2, Tris-EDTA,pH9.0 was used for antigen retrieval. 3,Secondary antibody was diluted at 1:200(room temperature, 45min).

| Contact information

Orders: order@immunoway.com
Support: tech@immunoway.com
Telephone: 877-594-3616 (Toll Free), 408-747-0185
Website: <http://www.immunoway.com>
Address: 2200 Ringwood Ave San Jose, CA 95131 USA



Please scan the QR code
to access additional
product information:
LRRC3 Rabbit pAb

For Research Use Only. Not for Use in Diagnostic Procedures.

[Antibody](#) | [ELISA Kits](#) | [Protein](#) | [Reagents](#)