

SIN1 Rabbit pAb

CatalogNo: YT7258

Key Features

Host Species

- Rabbit

Reactivity

- Human, Mouse, Rat

Applications

- WB, ELISA, IHC

MW

- 57kD (Calculated)

Isotype

- IgG

Recommended Dilution Ratios

WB 1:500-2000**IHC 1:50-300****ELISA 1:2000-20000**

Storage

Storage*

-15°C to -25°C/1 year(Do not lower than -25°C)

Formulation

Liquid in PBS containing 50% glycerol, 0.5% BSA and 0.02% sodium azide.

Basic Information

Clonality

Polyclonal

Immunogen Information

Immunogen

Synthesized peptide derived from human SIN1 AA range: 193-243

Specificity

This antibody detects endogenous levels of SIN1 at Human/Mouse/Rat

Target Information

Gene name

MAPKAP1 MIP1 SIN1

Protein Name SIN1

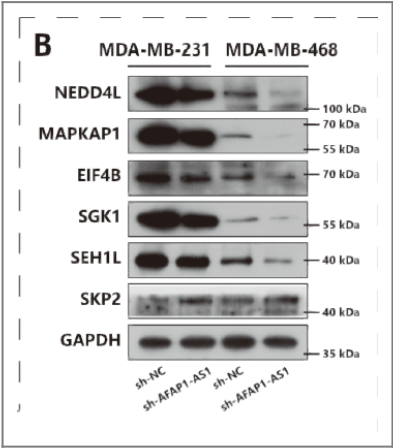
Organism	Gene ID	UniProt ID
Human	79109 ;	Q9BPZ7 ;
Mouse	227743 ;	Q8BKH7 ;
Rat	296648 ;	Q6AYF1 ;

Cellular Localization Cell membrane; Peripheral membrane protein. Cytoplasmic vesicle. Nucleus.

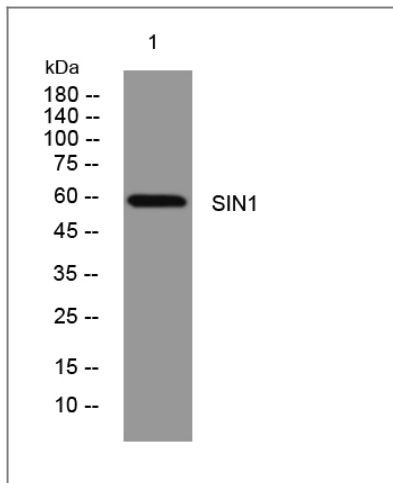
Tissue specificity Ubiquitously expressed, with highest levels in heart and skeletal muscle.

Function:Essential component of the TORC2 complex, which plays a critical role in AKT1 'Ser-473' phosphorylation, and may modulate the phosphorylation of PKCA and regulate actin cytoskeleton organization. Inhibits MAP3K2 by preventing its dimerization and autophosphorylation. Inhibits HRAS and KRAS signaling. Enhances osmotic stress-induced phosphorylation of ATF2 and ATF2-mediated transcription.,similarity:Belongs to the SIN1 family.,subunit:All isoforms except isoform 4 are able to be part of the target of rapamycin 2 complex (TORC2) comprised of FRAP1, LST8, PROTOR1, RICTOR and MAPKAP1. Interacts with ATF2, MAP3K2 and MAPK8. Interacts with GTP-bound HRAS and KRAS. Interacts with IFNAR2.,tissue specificity:Ubiquitously expressed, with highest levels in heart and skeletal muscle.,

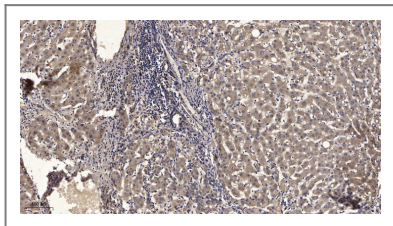
Validation Data



SP1-Induced Upregulation of LncRNA AFAP1-AS1 Promotes Tumor Progression in Triple-Negative Breast Cancer by Regulating mTOR Pathway. INTERNATIONAL JOURNAL OF MOLECULAR SCIENCES Yidong Zhou WB Human 1:500 MDA-231 cell,MDA-MB-468 cell



Western blot analysis of lysates from U2OS cells, primary antibody was diluted at 1:1000, 4° over night



Immunohistochemical analysis of paraffin-embedded human liver cancer. 1, Antibody was diluted at 1:200(4° overnight). 2, Tris-EDTA,pH9.0 was used for antigen retrieval. 3,Secondary antibody was diluted at 1:200(room temperature, 45min).

Contact information

Orders: order@immunoway.com
 Support: tech@immunoway.com
 Telephone: 877-594-3616 (Toll Free), 408-747-0185
 Website: <http://www.immunoway.com>
 Address: 2200 Ringwood Ave San Jose, CA 95131 USA



Please scan the QR code to access additional product information:
SIN1 Rabbit pAb

For Research Use Only. Not for Use in Diagnostic Procedures.

[Antibody](#) | [ELISA Kits](#) | [Protein](#) | [Reagents](#)