

FRPD2 Rabbit pAb

CatalogNo: YT6860

Key Features

Host Species

- Rabbit

Reactivity

- Human

Applications

- WB

MW

- 144kD (Calculated)

Isotype

- IgG

Storage

Storage* -15°C to -25°C/1 year(Do not lower than -25°C)

Formulation Liquid in PBS containing 50% glycerol, 0.5% BSA and 0.02% sodium azide.

Recommended Dilution Ratios

WB 1:500-2000

Basic Information

Clonality Polyclonal

Immunogen Information

Immunogen Synthesized peptide derived from human FRPD2 AA range: 1161-1211

Specificity This antibody detects endogenous levels of FRPD2 at Human

Target Information

Gene name FRMPD2 PDZD5C PDZK4 PDZK5C

Protein Name FRPD2

Organism

Human

Gene ID

[143162](#);

UniProt ID

[Q68DX3](#);

Cellular Localization

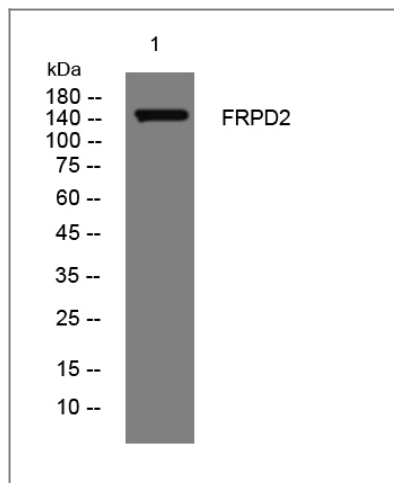
Cytoplasm . Basolateral cell membrane . Cell junction, tight junction . Colocalizes with CTNNB1, CDH1 and PKP4 at the basolateral membrane. Colocalizes with TJP1 at tight junctions. Its recruitment to cell-cell contacts requires CDH1.

Tissue specificity Expressed in epithelial cells.

Function

Caution:Could be the product of a pseudogene. This is the product of related genes or pseudogenes located in a region of chromosome 10q which contains a segmental duplication resulting in three nearly identical regions.,similarity:Contains 1 FERM domain.,similarity:Contains 1 KIND domain.,similarity:Contains 1 PDZ (DHR) domain.,similarity:Contains 2 PDZ (DHR) domains.,similarity:Contains 3 PDZ (DHR) domains.,

Validation Data



Western blot analysis of lysates from THP-1 cells, primary antibody was diluted at 1:1000, 4° over night

Contact information

Orders: order@immunoway.com
Support: tech@immunoway.com
Telephone: 877-594-3616 (Toll Free), 408-747-0185
Website: <http://www.immunoway.com>
Address: 2200 Ringwood Ave San Jose, CA 95131 USA



Please scan the QR code to access additional product information:
FRPD2 Rabbit pAb