

PM2PB Rabbit pAb

CatalogNo: YT6827

Key Features

Host Species

- Rabbit

Reactivity

- Human

Applications

- WB, IHC

MW

- 30kD (Calculated)

Isotype

- IgG

Storage

Storage* -15°C to -25°C/1 year (Do not lower than -25°C)**Formulation** Liquid in PBS containing 50% glycerol, 0.5% BSA and 0.02% sodium azide.

Recommended Dilution Ratios

WB 1:500-2000**IHC 1:50-300**

Basic Information

Clonality Polyclonal

Immunogen Information

Immunogen Synthesized peptide derived from human PM2PB AA range: 218-268**Specificity** This antibody detects endogenous levels of PM2PB at Human

Target Information

Gene name PMS2P11 PMS2L11 PMSR6

Protein Name PM2PB

Organism

Gene ID

UniProt ID

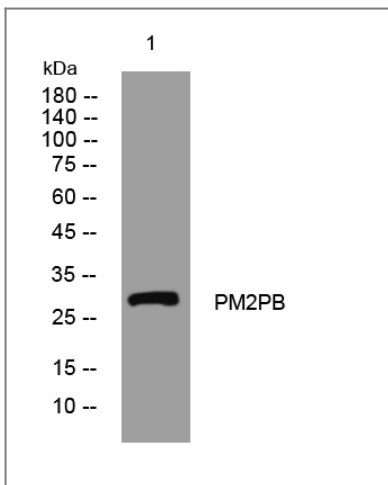
Human

[Q13670](#);

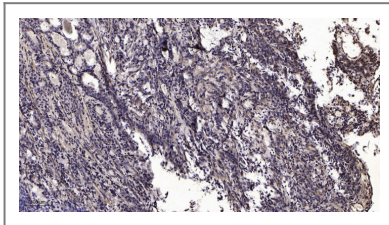
Cellular Localization

MutLalpha complex,

Validation Data



Western blot analysis of lysates from HuvEc cells, primary antibody was diluted at 1:1000, 4° over night



Immunohistochemical analysis of paraffin-embedded human Gastric adenocarcinoma. 1, Antibody was diluted at 1:200(4° overnight). 2, Tris-EDTA,pH9.0 was used for antigen retrieval. 3,Secondary antibody was diluted at 1:200(room temperature, 45min).

Contact information

Orders: order@immunoway.com
Support: tech@immunoway.com
Telephone: 877-594-3616 (Toll Free), 408-747-0185
Website: <http://www.immunoway.com>
Address: 2200 Ringwood Ave San Jose, CA 95131 USA



Please scan the QR code to access additional product information:
PM2PB Rabbit pAb