

## TBCD Rabbit pAb

CatalogNo: YT6655

### Key Features

#### Host Species

- Rabbit

#### Reactivity

- Human, Mouse

#### Applications

- WB

#### MW

- 131kD (Calculated)

#### Isotype

- IgG

### Storage

**Storage\*** -15°C to -25°C/1 year (Do not lower than -25°C)

**Formulation** Liquid in PBS containing 50% glycerol, 0.5% BSA and 0.02% sodium azide.

### Recommended Dilution Ratios

**WB 1:500-2000**

### Basic Information

**Clonality** Polyclonal

### Immunogen Information

**Immunogen** Synthesized peptide derived from human TBCD AA range: 419-469

**Specificity** This antibody detects endogenous levels of TBCD at Human/Mouse

### Target Information

**Gene name** TBCD KIAA0988 SSD1 TFCD PP1096

**Protein Name** TBCD

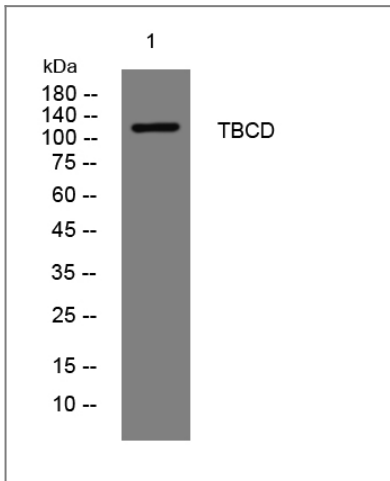
Organism	Gene ID	UniProt ID
Human	<a href="#">6904;</a>	<a href="#">Q9BTW9;</a>
Mouse	<a href="#">108903;</a>	<a href="#">Q8BYA0;</a>

**Cellular Localization** Cell junction, tight junction . Lateral cell membrane . Cytoplasm . Cell junction, adherens junction . Cytoplasm, cytoskeleton, microtubule organizing center, centrosome . Localized in cell-cell contacts. .

**Tissue specificity** Ubiquitously expressed.

**Function** Function:Tubulin-folding protein; involved in the first step of the tubulin folding pathway. Modulates microtubule dynamics by capturing GTP-bound beta-tubulin (TUBB).,induction:Down-regulated by shear stress.,similarity:Belongs to the TBCD family.,similarity:Contains 3 HEAT repeats.,subunit:Supercomplex made of cofactors A to E. Cofactors A and D function by capturing and stabilizing tubulin in a quasi-native conformation. Cofactor E binds to the cofactor D-tubulin complex; interaction with cofactor C then causes the release of tubulin polypeptides that are committed to the native state.,tissue specificity:Ubiquitously expressed.,

## Validation Data



Western blot analysis of lysates from 293T cells, primary antibody was diluted at 1:1000, 4° over night

## Contact information

Orders: [order@immunoway.com](mailto:order@immunoway.com)  
Support: [tech@immunoway.com](mailto:tech@immunoway.com)  
Telephone: 877-594-3616 (Toll Free), 408-747-0185  
Website: <http://www.immunoway.com>  
Address: 2200 Ringwood Ave San Jose, CA 95131 USA



Please scan the QR code to access additional product information:  
**TBCD Rabbit pAb**

