

## AP2B1 Rabbit pAb

CatalogNo: YT6636

### | Key Features

#### Host Species

- Rabbit

#### Reactivity

- Human, Mouse, Rat

#### Applications

- WB

#### MW

- 103kD (Calculated)

#### Isotype

- IgG

### | Recommended Dilution Ratios

WB 1:500-2000

### | Storage

**Storage\*** -15°C to -25°C/1 year (Do not lower than -25°C)

**Formulation** Liquid in PBS containing 50% glycerol, 0.5% BSA and 0.02% sodium azide.

### | Basic Information

**Clonality** Polyclonal

### | Immunogen Information

**Immunogen** Synthesized peptide derived from human AP2B1 AA range: 70-120

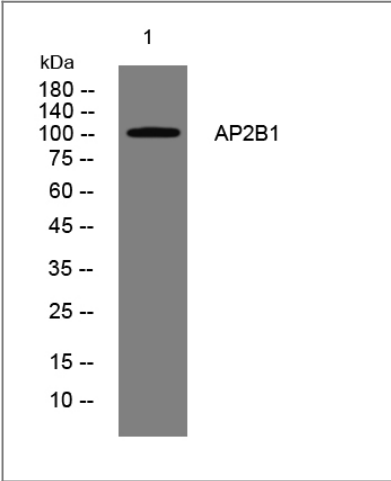
**Specificity** This antibody detects endogenous levels of AP2B1 at Human/Mouse/Rat

### | Target Information

**Gene name** AP2B1 ADTB2 CLAPB1

<b>Protein Name</b>	AP2B1		
	<b>Organism</b>	<b>Gene ID</b>	<b>UniProt ID</b>
	Human	<a href="#">163;</a>	<a href="#">P63010;</a>
	Mouse	<a href="#">71770;</a>	<a href="#">Q9DBG3;</a>
	Rat	<a href="#">100912146;</a>	<a href="#">P62944;</a>
<b>Cellular Localization</b>	Cell membrane . Membrane, coated pit ; Peripheral membrane protein ; Cytoplasmic side . AP-2 appears to be excluded from internalizing CCVs and to disengage from sites of endocytosis seconds before internalization of the nascent CCV.		
<b>Tissue specificity</b>	Expressed in the brain (at protein level).		
<b>Function</b>	<p>Function:Component of the adaptor complexes which link clathrin to receptors in coated vesicles. Clathrin-associated protein complexes are believed to interact with the cytoplasmic tails of membrane proteins, leading to their selection and concentration. AP2B1 is a subunit of the plasma membrane adaptor. The complex binds polyphosphoinositides.,similarity:Belongs to the adaptor complexes large subunit family.,subcellular location:Component of the coat surrounding the cytoplasmic face of coated vesicles in the plasma membrane.,subunit:Adaptor protein complex 2 (AP-2) is an heterotetramer composed of two large adaptins (alpha-type subunit AP2A1 or AP2A2 and beta-type subunit AP2B1), a medium adaptin (mu-type subunit AP2M1) and a small adaptin (sigma-type subunit AP2S1). Binds EPN1, EPS15, SNAP91 and clathrin.,</p>		

Validation Data



Western blot analysis of lysates from HpeG2 cells, primary antibody was diluted at 1:1000, 4°over night

Contact information

Orders: [order@immunoway.com](mailto:order@immunoway.com)  
Support: [tech@immunoway.com](mailto:tech@immunoway.com)  
Telephone: 877-594-3616 (Toll Free), 408-747-0185  
Website: <http://www.immunoway.com>  
Address: 2200 Ringwood Ave San Jose, CA 95131 USA



Please scan the QR code  
to access additional  
product information:  
**AP2B1 Rabbit pAb**

---

For Research Use Only. Not for Use in Diagnostic Procedures.

[Antibody](#) | [ELISA Kits](#) | [Protein](#) | [Reagents](#)