

## PPR37 Rabbit pAb

CatalogNo: YT6383

### Key Features

#### Host Species

- Rabbit

#### Reactivity

- Human, Mouse, Rat

#### Applications

- WB

#### MW

- 76kD (Calculated)

#### Isotype

- IgG

### Storage

**Storage\*** -15°C to -25°C/1 year (Do not lower than -25°C)

**Formulation** Liquid in PBS containing 50% glycerol, 0.5% BSA and 0.02% sodium azide.

### Recommended Dilution Ratios

**WB 1:500-2000**

### Basic Information

**Clonality** Polyclonal

### Immunogen Information

**Immunogen** Synthesized peptide derived from human PPR37 AA range: 15-65

**Specificity** This antibody detects endogenous levels of PPR37 at Human/Mouse/Rat

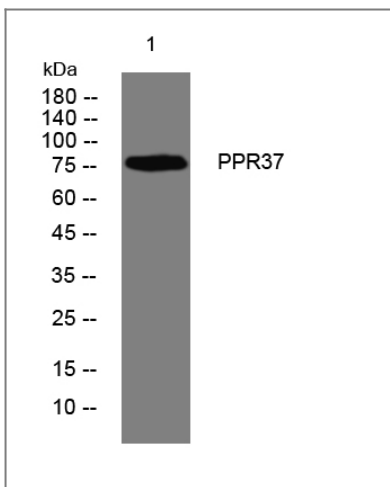
### Target Information

**Gene name** PPP1R37 KIAA1986 LRRC68

**Protein Name** PPR37

<b>Organism</b>	<b>Gene ID</b>	<b>UniProt ID</b>
Human	<a href="#">284352;</a>	<a href="#">O75864;</a>
Mouse	<a href="#">232947;</a>	<a href="#">Q8BKR5;</a>
Rat	<a href="#">308398;</a>	<a href="#">B2RYF1;</a>

## Validation Data



Western blot analysis of lysates from A431 cells, primary antibody was diluted at 1:1000, 4° over night

## Contact information

Orders: [order@immunoway.com](mailto:order@immunoway.com)  
Support: [tech@immunoway.com](mailto:tech@immunoway.com)  
Telephone: 877-594-3616 (Toll Free), 408-747-0185  
Website: <http://www.immunoway.com>  
Address: 2200 Ringwood Ave San Jose, CA 95131 USA



Please scan the QR code to access additional product information:  
**PPR37 Rabbit pAb**

For Research Use Only. Not for Use in Diagnostic Procedures.

[Antibody](#) | [ELISA Kits](#) | [Protein](#) | [Reagents](#)