

## GCK/GLK Rabbit pAb

CatalogNo: YT6093

### Key Features

**Host Species**

- Rabbit

**Reactivity**

- Human,Rat

**Applications**

- WB,ELISA

**MW**

- 100kD (Observed)

**Isotype**

- IgG

### Storage

**Storage\*** -15°C to -25°C/1 year(Do not lower than -25°C)**Formulation** Liquid in PBS containing 50% glycerol, 0.5% BSA and 0.02% sodium azide.

### Recommended Dilution Ratios

**WB 1:500-2000****ELISA 1:10000-20000**

### Basic Information

**Clonality** Polyclonal

### Immunogen Information

**Immunogen** Synthesized peptide derived from human GCK/GLK. at AA range: 221-270**Specificity** GCK/GLK Polyclonal Antibody detects endogenous levels of GCK/GLK

### Target Information

**Gene name** MAP4K2/MAP4K3

**Protein Name** GCK/GLK

**Organism**

**Gene ID**

**UniProt ID**

Human

[5871](#); [8491](#);

[Q12851](#); [Q81VH8](#);

**Cellular Localization**

Cytoplasm . Basolateral cell membrane ; Peripheral membrane protein . Golgi apparatus membrane ; Peripheral membrane protein .

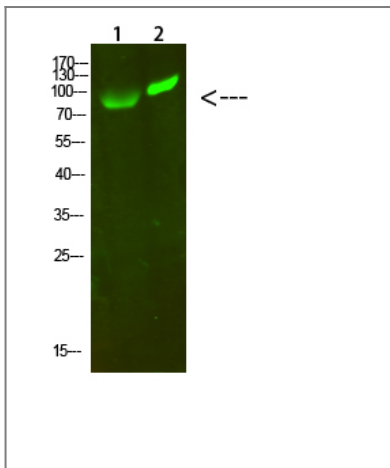
**Tissue specificity**

Highly expressed in germinal center but not mantle zone B-cells. Also expressed in lung, brain and placenta and at lower levels in other tissues examined.

**Function**

Catalytic activity:ATP + a protein = ADP + a phosphoprotein.,cofactor:Magnesium.,Function:Enhances MAP3K1 oligomerization, which may relieve amino-terminal mediated MAP3K1 autoinhibition and lead to activation following autophosphorylation. May play a role in the regulation of vesicle targeting or fusion.,sequence Caution:Contaminating sequence. Sequence of unknown origin in the N-terminal part.,similarity:Belongs to the protein kinase superfamily. STE Ser/Thr protein kinase family. STE20 subfamily.,similarity:Contains 1 CNH domain.,similarity:Contains 1 protein kinase domain.,subunit:Interacts with TRAF2, MAP3K1 and RAB8A.,tissue specificity:Highly expressed in germinal center but not mantle zone B-cells. Also expressed in lung, brain and placenta and at lower levels in other tissues examined.,

## Validation Data



Western Blot analysis of 1,293T 2, hela cells using primary antibody diluted at 1:1000(4°C overnight). Secondary antibody:Goat Anti-rabbit IgG IRDye 800( diluted at 1:5000, 25°C, 1 hour)

## Contact information

Orders: [order@immunoway.com](mailto:order@immunoway.com)  
Support: [tech@immunoway.com](mailto:tech@immunoway.com)  
Telephone: 877-594-3616 (Toll Free), 408-747-0185  
Website: <http://www.immunoway.com>  
Address: 2200 Ringwood Ave San Jose, CA 95131 USA



Please scan the QR code to access additional product information:  
**GCK/GLK Rabbit pAb**

