

HLA-DM β Rabbit pAb

CatalogNo: YT6025

Key Features

Host Species

- Rabbit

Reactivity

- Human

Applications

- IHC,IF,ELISA

Isotype

- IgG

Recommended Dilution Ratios

IHC 1:50-200

ELISA 1:10000-20000

IF 1:50-200

Storage

Storage* -15°C to -25°C/1 year(Do not lower than -25°C)**Formulation** Liquid in PBS containing 50% glycerol, 0.5% BSA and 0.02% sodium azide.

Basic Information

Clonality Polyclonal

Immunogen Information

Immunogen Synthetic peptide from human protein at AA range: 40-100**Specificity** The antibody detects endogenous HLA-DM β

Target Information

Gene name HLA-DMB DMB RING7

Protein Name HLA class II histocompatibility antigen, DM beta chain (MHC class II antigen DMB) (Really interesting new gene 7 protein)

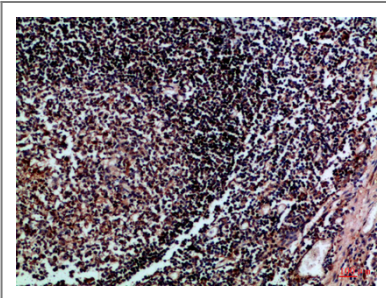
Organism	Gene ID	UniProt ID
Human	3109 ;	P28068 ;
Mouse		P35737 ;

Cellular Localization Late endosome membrane ; Single-pass type I membrane protein . Lysosome membrane ; Single-pass type I membrane protein . Localizes to late endocytic compartment. Associates with lysosome membranes.

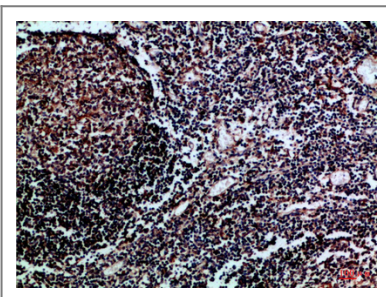
Tissue specificity Blood,Lymph,Plasma,Spleen,

Function Domain:The YXXZ (Tyr-Xaa-Xaa-Zaa, where Zaa is a hydrophobic residue) motif mediates the targeting to the lysosomal compartments.,Function:Plays a critical role in catalyzing the release of class II HLA-associated invariant chain-derived peptides (CLIP) from newly synthesized class II HLA molecules and freeing the peptide binding site for acquisition of antigenic peptides.,polymorphism:The following alleles of DMB are known: DMB*0101, DMB*0102, DMB*0103, DMB*0104 (DMB3.4), DMB*0105 and DMB*0106. The sequence shown is that of DMB*0101.,similarity:Belongs to the MHC class II family.,similarity:Contains 1 Ig-like C1-type (immunoglobulin-like) domain.,subcellular location:Localizes to late endocytic compartment. Associates with lysosome membranes.,subunit:Heterodimer of an alpha chain (DMA) and a beta chain (DMB).,

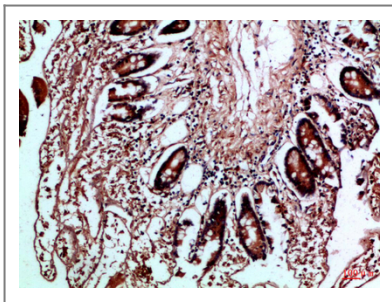
Validation Data



Immunohistochemical analysis of paraffin-embedded Human-tonsil, antibody was diluted at 1:100



Immunohistochemical analysis of paraffin-embedded Human-tonsil, antibody was diluted at 1:100



Immunohistochemical analysis of paraffin-embedded Human-colon, antibody was diluted at 1:100

| Contact information

Orders: order@immunoway.com
Support: tech@immunoway.com
Telephone: 877-594-3616 (Toll Free), 408-747-0185
Website: <http://www.immunoway.com>
Address: 2200 Ringwood Ave San Jose, CA 95131 USA



Please scan the QR code to access additional product information:
HLA-DM β Rabbit pAb

For Research Use Only. Not for Use in Diagnostic Procedures.

[Antibody](#) | [ELISA Kits](#) | [Protein](#) | [Reagents](#)