

Amphiregulin Rabbit pAb

CatalogNo: YT5644

Key Features

Host Species

- Rabbit

Reactivity

- Human,Rat,Mouse,

Applications

- WB,ELISA

MW

- 17kD (Observed)

Isotype

- IgG

Recommended Dilution Ratios

WB 1:500-1:2000

ELISA 1:10000

Not yet tested in other applications.

Storage

Storage*

-15°C to -25°C/1 year(Do not lower than -25°C)

Formulation

Liquid in PBS containing 50% glycerol, 0.5% BSA and 0.02% sodium azide.

Basic Information

Clonality

Polyclonal

Immunogen Information

Immunogen

The antiserum was produced against synthesized peptide derived from the Internal region of human AREG/AREGB. AA range:91-140

Specificity

Amphiregulin Polyclonal Antibody detects endogenous levels of Amphiregulin protein.

Target Information

Gene name AREG/AREGB

Protein Name Amphiregulin

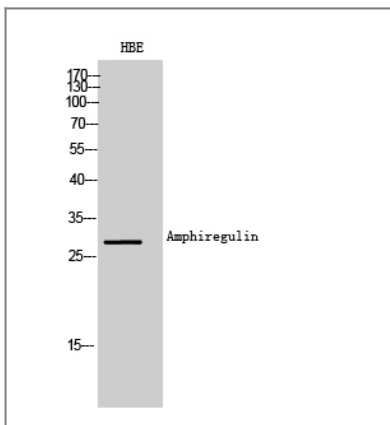
Organism	Gene ID	UniProt ID
Human	374 ; 727738 ;	P15514 ;
Mouse	11839 ;	P31955 ;
Rat	29183 ;	P24338 ;

Cellular Localization Membrane; Single-pass membrane protein.

Tissue specificity Brain,Pooled,

Function Function:Bifunctional growth-modulating glycoprotein. Inhibits growth of several human carcinoma cells in culture and stimulates proliferation of human fibroblasts and certain other tumor cells.,induction:By phorbol 12-myristate 13-acetate (PMA).,miscellaneous:AR is a protein containing cysteines in disulfide linkage(s) that are essential for its biological activity. AR may contain oligosaccharides and/or lipid moieties that are not obligatory for the biological activity.,similarity:Belongs to the amphiregulin family.,similarity:Contains 1 EGF-like domain.,subunit:The immature precursor interacts with CNIH.,

Validation Data



Western Blot analysis of HBE cells using Amphiregulin Polyclonal Antibody. Secondary antibody(catalog#:RS0002) was diluted at 1:20000

Contact information

Orders: order@immunoway.com
Support: tech@immunoway.com
Telephone: 877-594-3616 (Toll Free), 408-747-0185
Website: <http://www.immunoway.com>
Address: 2200 Ringwood Ave San Jose, CA 95131 USA



Please scan the QR code to access additional product information:
Amphiregulin
Rabbit pAb

