

## IL-28 Rabbit pAb

CatalogNo: YT5305

### Key Features

#### Host Species

- Rabbit

#### Reactivity

- Human, Mouse

#### Applications

- WB, IHC, IF, ELISA

#### MW

- 25kD (Observed)

#### Isotype

- IgG

### Recommended Dilution Ratios

**WB 1:500-1:2000**

**IHC: 1:100-1:300**

**ELISA 1:20000**

**IF 1:50-200**

### Storage

#### Storage\*

-15°C to -25°C/1 year (Do not lower than -25°C)

#### Formulation

Liquid in PBS containing 50% glycerol, 0.5% BSA and 0.02% sodium azide.

### Basic Information

#### Clonality

Polyclonal

### Immunogen Information

#### Immunogen

The antiserum was produced against synthesized peptide derived from the C-terminal region of human IL28A. AA range:131-180

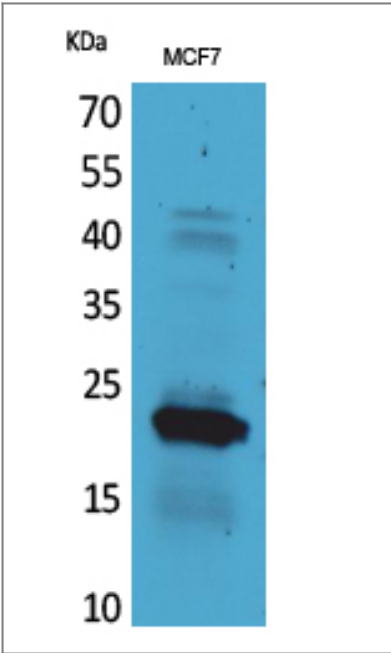
#### Specificity

IL-28 Polyclonal Antibody detects endogenous levels of IL-28 protein.

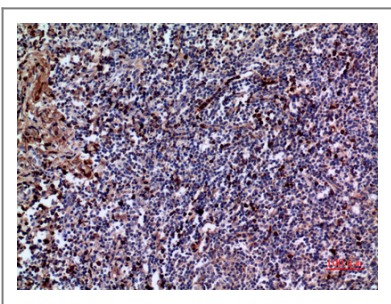
### Target Information

Gene name	IL28A		
Protein Name	Interleukin-28A		
	Organism	Gene ID	UniProt ID
	Human	<a href="#">282616;</a>	<a href="#">Q8IZJ0;</a>
	Mouse	<a href="#">330496;</a>	<a href="#">Q4VK74;</a>
Cellular Localization	Secreted .		
Tissue specificity	Pooled,		
Function	Caution:It is uncertain whether Met-1 or Met-5 is the initiator.,Function:Cytokine with immunomodulatory activity. Up-regulates MHC class I antigen expression. Displays potent antiviral activity. Also displays antitumor activity. Ligand for the heterodimeric class II cytokine receptor composed of IL10RB and IL28RA. The ligand/receptor complex seems to signal through the Jak-STAT pathway.,induction:By viral infections or double stranded RNA.,online information:Interleukin-28 entry,similarity:Belongs to the IL-28/IL-29 family.,		

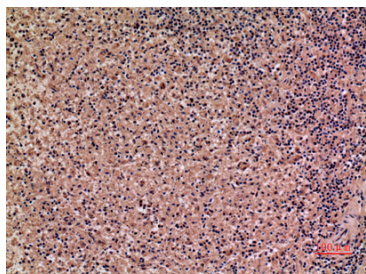
| Validation Data



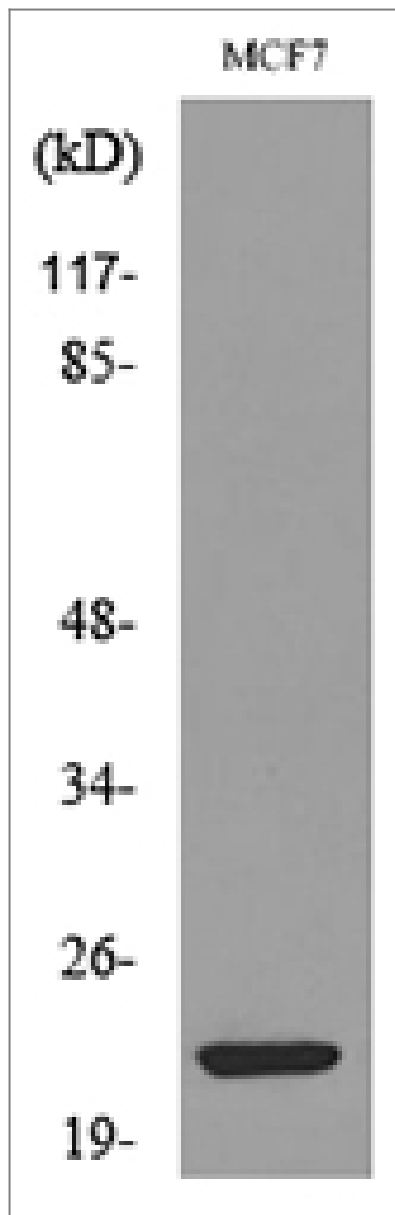
Western Blot analysis of MCF7 cells using IL-28 Polyclonal Antibody. Secondary antibody(catalog#:RS0002) was diluted at 1:20000



Immunohistochemical analysis of paraffin-embedded human-tonsil, antibody was diluted at 1:100



Immunohistochemical analysis of paraffin-embedded human-spleen, antibody was diluted at 1:100



Western blot analysis of lysate from MCF7 cells, using IL28A Antibody.

## **Contact information**

Orders: [order@immunoway.com](mailto:order@immunoway.com)  
 Support: [tech@immunoway.com](mailto:tech@immunoway.com)  
 Telephone: 877-594-3616 (Toll Free), 408-747-0185  
 Website: <http://www.immunoway.com>  
 Address: 2200 Ringwood Ave San Jose, CA 95131 USA



Please scan the QR code  
 to access additional  
 product information:  
**IL-28 Rabbit pAb**

