

## CD79b Rabbit pAb

CatalogNo: YT5255

### Key Features

#### Host Species

- Rabbit

#### Reactivity

- Human, Mouse

#### Applications

- WB, IHC, IF, ELISA

#### MW

- 37kD (Observed)

#### Isotype

- IgG

### Recommended Dilution Ratios

**WB 1:500-1:2000**

**IHC: 1:100-300**

**ELISA 1:20000**

**IF 1:50-200**

### Storage

#### Storage\*

-15°C to -25°C/1 year (Do not lower than -25°C)

#### Formulation

Liquid in PBS containing 50% glycerol, 0.5% BSA and 0.02% sodium azide.

### Basic Information

#### Clonality

Polyclonal

### Immunogen Information

#### Immunogen

The antiserum was produced against synthesized peptide derived from the Internal region of human CD79B. AA range: 61-110

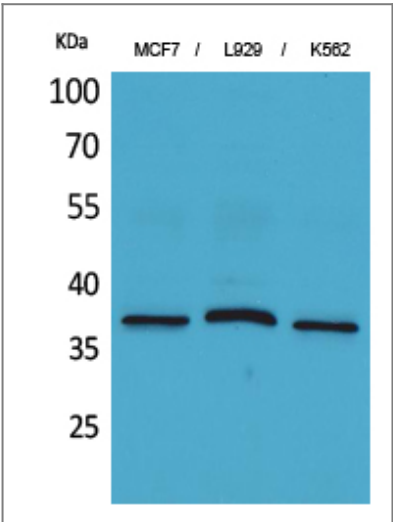
#### Specificity

CD79b Polyclonal Antibody detects endogenous levels of CD79b protein.

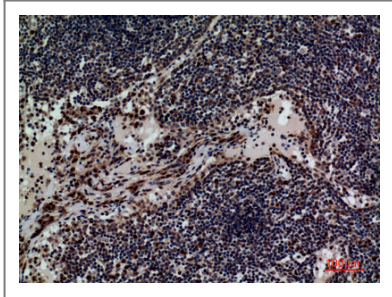
### Target Information

Gene name	CD79B		
Protein Name	B-cell antigen receptor complex-associated protein beta chain		
	Organism	Gene ID	UniProt ID
	Human	<a href="#">974;</a>	<a href="#">P40259;</a>
	Mouse		<a href="#">P15530;</a>
Cellular Localization	Cell membrane; Single-pass type I membrane protein. Following antigen binding, the BCR has been shown to translocate from detergent-soluble regions of the cell membrane to lipid rafts although signal transduction through the complex can also occur outside lipid rafts. .		
Tissue specificity	B-cells.		
Function	Disease:Defects in CD79B are a cause of non-Bruton type agammaglobulinemia [MIM:601495]. Agammaglobulinemia is an immunodeficiency disease which results in developmental defects in the maturation pathway of B-cells.,Function:Required in cooperation with CD79A for initiation of the signal transduction cascade activated by the B-cell antigen receptor complex (BCR) which leads to internalization of the complex, trafficking to late endosomes and antigen presentation. Enhances phosphorylation of CD79A, possibly by recruiting kinases which phosphorylate CD79A or by recruiting proteins which bind to CD79A and protect it from dephosphorylation.,online information:CD79B mutation db,PTM:Phosphorylated on tyrosine upon B-cell activation.,similarity:Contains 1 Ig-like V-type (immunoglobulin-like) domain.,similarity:Contains 1 ITAM domain.,subcellular location:Following antigen binding, the BCR has been shown to translocate from detergent-soluble regions of the cell membrane to lipid rafts although signal transduction through the complex can also occur outside lipid rafts.,subunit:Heterodimer of alpha and beta chains; disulfide-linked. Part of the B-cell antigen receptor complex where the alpha/beta chain heterodimer is non-covalently associated with an antigen-specific membrane-bound surface immunoglobulin of two heavy chains and two light chains.,tissue specificity:B-cells.,		

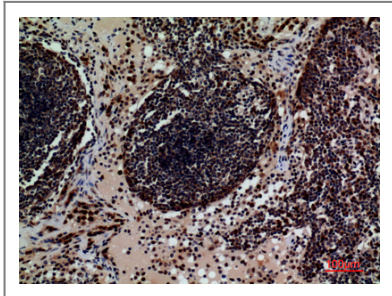
| Validation Data



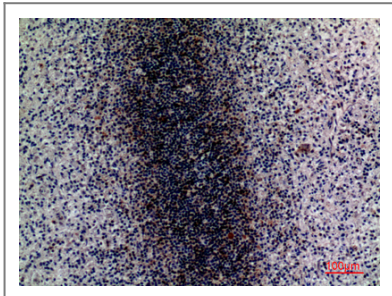
Western Blot analysis of MCF7, L929, K562 cells using CD79b Polyclonal Antibody. Secondary antibody(catalog#:RS0002) was diluted at 1:20000



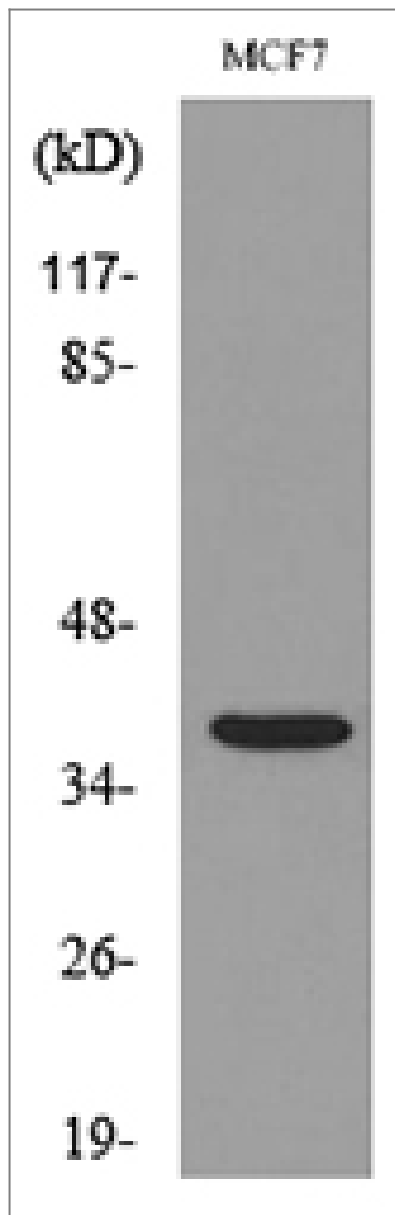
Immunohistochemical analysis of paraffin-embedded human-lymph, antibody was diluted at 1:100



Immunohistochemical analysis of paraffin-embedded human-lymph, antibody was diluted at 1:100



Immunohistochemical analysis of paraffin-embedded human-spleen, antibody was diluted at 1:100



Western blot analysis of lysate from MCF7 cells, using CD79B Antibody.

## Contact information

Orders: [order@immunoway.com](mailto:order@immunoway.com)  
Support: [tech@immunoway.com](mailto:tech@immunoway.com)  
Telephone: 877-594-3616 (Toll Free), 408-747-0185  
Website: <http://www.immunoway.com>  
Address: 2200 Ringwood Ave San Jose, CA 95131 USA



Please scan the QR code  
to access additional  
product information:  
**CD79b Rabbit pAb**

For Research Use Only. Not for Use in Diagnostic Procedures.

[Antibody](#) | [ELISA Kits](#) | [Protein](#) | [Reagents](#)