

CD58 Rabbit pAb

CatalogNo: YT5251

Key Features

Host Species

- Rabbit

Reactivity

- Human

Applications

- WB,IHC,IF,ELISA

MW

- 27kD (Observed)

Isotype

- IgG

Recommended Dilution Ratios

WB 1:500-1:2000

IHC: 1:100-300

ELISA 1:20000

IF 1:50-200

Storage

Storage* -15°C to -25°C/1 year(Do not lower than -25°C)

Formulation Liquid in PBS containing 50% glycerol, 0.5% BSA and 0.02% sodium azide.

Basic Information

Clonality Polyclonal

Immunogen Information

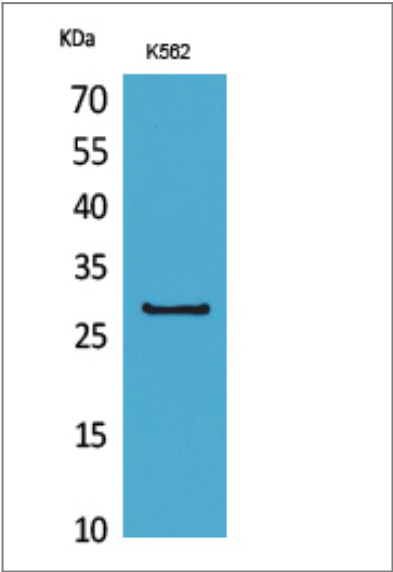
Immunogen The antiserum was produced against synthesized peptide derived from the Internal region of human CD58. AA range:31-80

Specificity CD58 Polyclonal Antibody detects endogenous levels of CD58 protein.

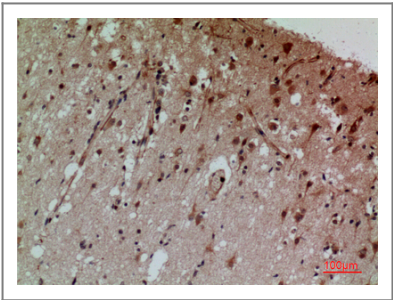
Target Information

Gene name	CD58		
Protein Name	Lymphocyte function-associated antigen 3		
	Organism	Gene ID	UniProt ID
	Human	965 ;	P19256 ;
Cellular Localization	[Isoform 1]: Cell membrane; Single-pass type I membrane protein.		
Tissue specificity	Brain,Erythrocyte,		
Function	Function:Ligand of the T-lymphocyte CD2 glycoprotein. This interaction is important in mediating thymocyte interactions with thymic epithelial cells, antigen-independent and -dependent interactions of T-lymphocytes with target cells and antigen-presenting cells and the T-lymphocyte rosetting with erythrocytes. In addition, the LFA-3/CD2 interaction may prime response by both the CD2+ and LFA-3+ cells.,similarity:Contains 1 Ig-like C2-type (immunoglobulin-like) domain.,		

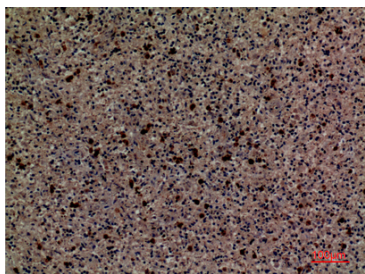
Validation Data



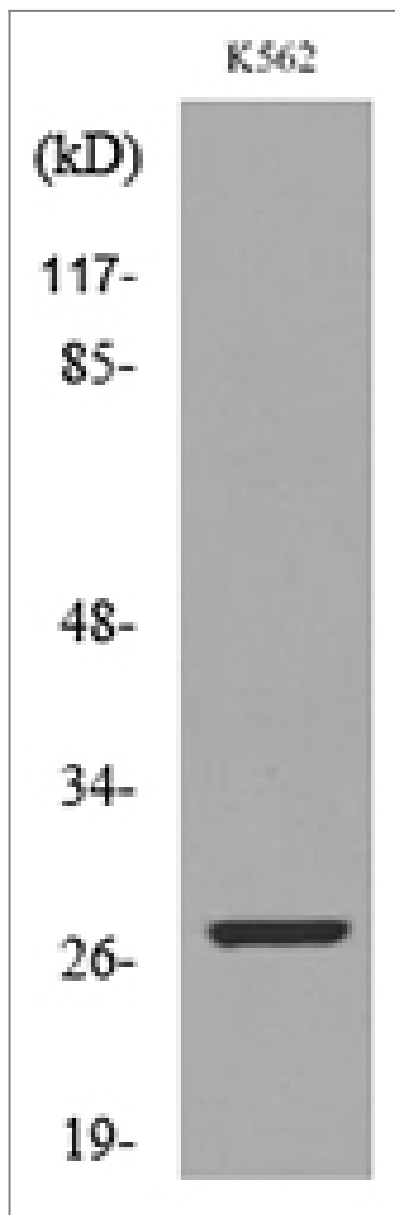
Western Blot analysis of K562 cells using CD58 Polyclonal Antibody. Secondary antibody(catalog#:RS0002) was diluted at 1:20000



Immunohistochemical analysis of paraffin-embedded human-brain, antibody was diluted at 1:100



Immunohistochemical analysis of paraffin-embedded human-spleen, antibody was diluted at 1:100



Western blot analysis of lysate from K562 cells, using CD58 Antibody.

Contact information

Orders: order@immunoway.com
 Support: tech@immunoway.com
 Telephone: 877-594-3616 (Toll Free), 408-747-0185
 Website: <http://www.immunoway.com>
 Address: 2200 Ringwood Ave San Jose, CA 95131 USA



Please scan the QR code
 to access additional
 product information:
CD58 Rabbit pAb

