

VHR Rabbit pAb

CatalogNo: YT5228

| Key Features

Host Species

- Rabbit

Reactivity

- Human, Mouse, Rat

Applications

- WB, IHC, IF, ELISA

MW

- 21kD (Observed)

Isotype

- IgG

| Recommended Dilution Ratios

WB 1:500-1:2000

IHC: 1:100-300

ELISA 1:20000

IF 1:50-200

| Storage

Storage*

-15°C to -25°C/1 year (Do not lower than -25°C)

Formulation

Liquid in PBS containing 50% glycerol, 0.5% BSA and 0.02% sodium azide.

| Basic Information

Clonality

Polyclonal

| Immunogen Information

Immunogen

The antiserum was produced against synthesized peptide derived from the C-terminal region of human DUSP3. AA range:136-185

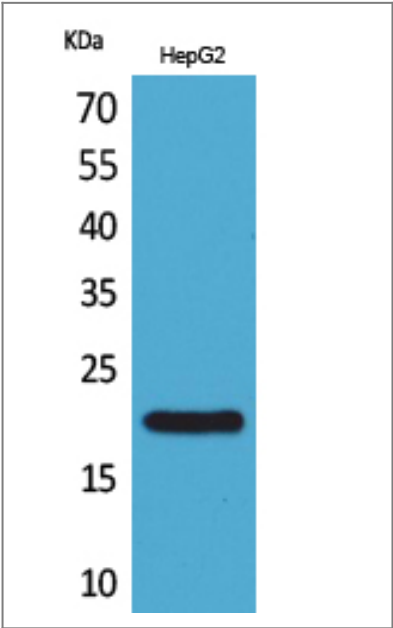
Specificity

VHR Polyclonal Antibody detects endogenous levels of VHR protein.

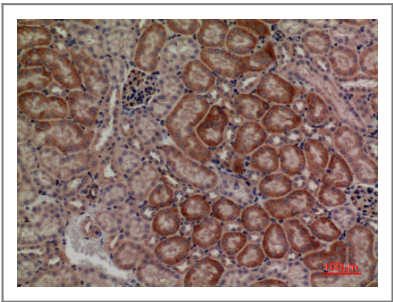
| Target Information

Gene name	DUSP3									
Protein Name	Dual specificity protein phosphatase 3									
	<table><tr><th>Organism</th><th>Gene ID</th><th>UniProt ID</th></tr><tr><td>Human</td><td>1845;</td><td>P51452;</td></tr><tr><td>Mouse</td><td>72349;</td><td>Q9D7X3;</td></tr></table>	Organism	Gene ID	UniProt ID	Human	1845 ;	P51452 ;	Mouse	72349 ;	Q9D7X3 ;
Organism	Gene ID	UniProt ID								
Human	1845 ;	P51452 ;								
Mouse	72349 ;	Q9D7X3 ;								
Cellular Localization	Nucleus .									
Tissue specificity	Duodenum,Uterus,									
Function	Catalytic activity:A phosphoprotein + H(2)O = a protein + phosphate.,Catalytic activity:Protein tyrosine phosphate + H(2)O = protein tyrosine + phosphate.,Function:This protein shows activity both toward tyrosine-protein phosphate as well as with serine-protein phosphate.,similarity:Belongs to the protein-tyrosine phosphatase family. Non-receptor class dual specificity subfamily.,similarity:Contains 1 tyrosine-protein phosphatase domain.,									

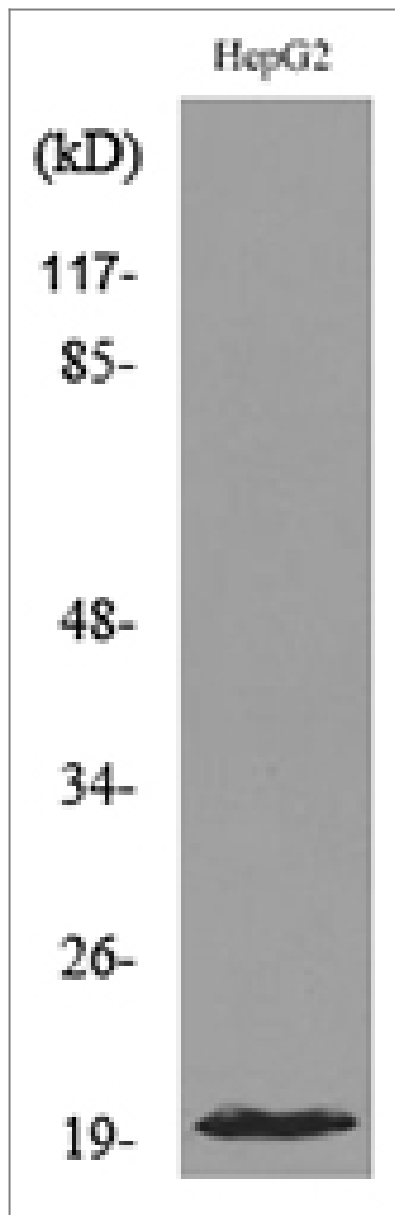
| Validation Data



Western Blot analysis of HepG2 cells using VHR Polyclonal Antibody. Secondary antibody(catalog#:RS0002) was diluted at 1:20000 cells nucleus extracted by Minute TM Cytoplasmic and Nuclear Fractionation kit (SC-003,Inventbiotech,MN,USA).



Immunohistochemical analysis of paraffin-embedded mouse-kidney, antibody was diluted at 1:100



Western blot analysis of lysate from HepG2 cells, using DUSP3 Antibody.

Contact information

Orders: order@immunoway.com
Support: tech@immunoway.com
Telephone: 877-594-3616 (Toll Free), 408-747-0185
Website: <http://www.immunoway.com>
Address: 2200 Ringwood Ave San Jose, CA 95131 USA



Please scan the QR code
to access additional
product information:
VHR Rabbit pAb

For Research Use Only. Not for Use in Diagnostic Procedures.

[Antibody](#) | [ELISA Kits](#) | [Protein](#) | [Reagents](#)