

## NPRL2 Rabbit pAb

CatalogNo: YT5086

### Key Features

**Host Species**

- Rabbit

**Reactivity**

- Human, Mouse, Rat

**Applications**

- WB, ELISA

**MW**

- 43kD (Observed)

**Isotype**

- IgG

### Storage

**Storage\*** -15°C to -25°C/1 year (Do not lower than -25°C)**Formulation** Liquid in PBS containing 50% glycerol, 0.5% BSA and 0.02% sodium azide.

### Recommended Dilution Ratios

**WB 1:500-1:2000****ELISA 1:20000****Not yet tested in other applications.**

### Basic Information

**Clonality** Polyclonal

### Immunogen Information

**Immunogen** Synthesized peptide derived from the C-terminal region of human NPRL2.**Specificity** NPRL2 Polyclonal Antibody detects endogenous levels of NPRL2 protein.

### Target Information

**Gene name** NPRL2

**Protein Name** Nitrogen permease regulator 2-like protein

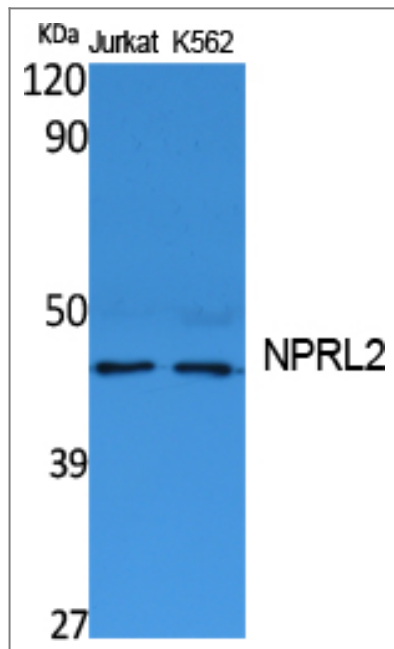
Organism	Gene ID	UniProt ID
Human	<a href="#">10641</a> ;	<a href="#">Q8WTW4</a> ;
Mouse	<a href="#">56032</a> ;	<a href="#">Q9WUE4</a> ;

**Cellular Localization** Lysosome membrane . Localization to lysosomes is amino acid-independent. .

**Tissue specificity** Most abundant in skeletal muscle, followed by brain, liver and pancreas, with lower amounts in lung, kidney, placenta and heart. Expressed in the frontal lobe cortex as well as in the temporal, parietal, and occipital lobes (PubMed:27173016, PubMed:26505888). Expressed in most lung cancer cell lines tested.

**Function** Function:Suppresses Src-dependent tyrosine phosphorylation and activation of PDPK1 and its downstream signaling. Down-regulates PDPK1 kinase activity by interfering with tyrosine phosphorylation at the Tyr-9 Tyr-373 and Tyr-376 residues. May act as a tumor suppressor. Suppresses cell growth and enhanced sensitivity to various anticancer drugs.,similarity:Belongs to the NPR2 family.,subunit:Interacts with PDPK1.,tissue specificity:Most abundant in skeletal muscle, followed by brain, liver and pancreas, with lower amounts in lung, kidney, placenta and heart. Expressed in most lung cancer cell lines tested.,

## Validation Data



## Contact information

Orders: order@immunoway.com  
Support: tech@immunoway.com  
Telephone: 877-594-3616 (Toll Free), 408-747-0185  
Website: <http://www.immunoway.com>  
Address: 2200 Ringwood Ave San Jose, CA 95131 USA



Please scan the QR code  
to access additional  
product information:  
**NPRL2 Rabbit pAb**

---

For Research Use Only. Not for Use in Diagnostic Procedures.

[Antibody](#) | [ELISA Kits](#) | [Protein](#) | [Reagents](#)