

ZN-16 Rabbit pAb

CatalogNo: YT4954

Key Features

Host Species

- Rabbit

Reactivity

- Human

Applications

- WB,ELISA

MW

- 300kD (Observed)

Isotype

- IgG

Recommended Dilution Ratios

WB 1:500-1:2000

ELISA 1:40000

Not yet tested in other applications.

Storage

Storage*

-15°C to -25°C/1 year(Do not lower than -25°C)

Formulation

Liquid in PBS containing 50% glycerol, 0.5% BSA and 0.02% sodium azide.

Basic Information

Clonality

Polyclonal

Immunogen Information

Immunogen

The antiserum was produced against synthesized peptide derived from human ZNF292. AA range:1311-1360

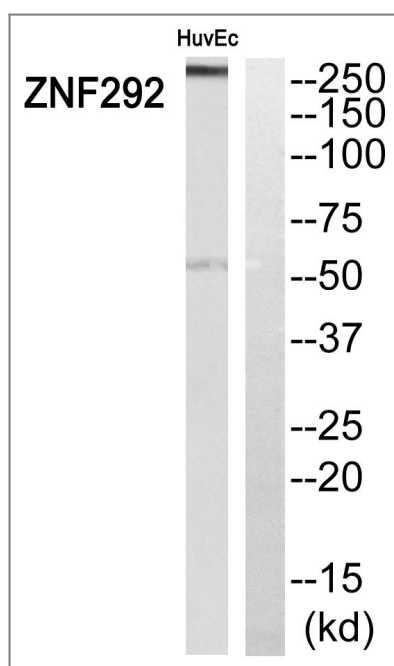
Specificity

ZN-16 Polyclonal Antibody detects endogenous levels of ZN-16 protein.

Target Information

Gene name	ZNF292		
Protein Name	Zinc finger protein 292		
	Organism	Gene ID	UniProt ID
	Human	23036 ;	O60281 ;
	Mouse		Q9Z2U2 ;
Cellular Localization	Nucleus .		
Tissue specificity	Bladder,Brain,Human endometrium,Placenta,Thalamus,		
Function	Function:May be involved in transcriptional regulation.,PTM:Phosphorylated upon DNA damage, probably by ATM or ATR.,similarity:Belongs to the krueppel C2H2-type zinc-finger protein family.,similarity:Contains 9 C2H2-type zinc fingers.,		

Validation Data



Western blot analysis of ZNF292 Antibody. The lane on the right is blocked with the ZNF292 peptide.

Contact information

Orders: order@immunoway.com
 Support: tech@immunoway.com
 Telephone: 877-594-3616 (Toll Free), 408-747-0185
 Website: <http://www.immunoway.com>
 Address: 2200 Ringwood Ave San Jose, CA 95131 USA



Please scan the QR code to access additional product information:
ZN-16 Rabbit pAb

