

ZC3H4 Rabbit pAb

CatalogNo: YT4938

Key Features

Host Species

- Rabbit

Reactivity

- Human, Mouse

Applications

- IHC, IF, ELISA

MW

- 140kD (Calculated)

Isotype

- IgG

Storage

Storage* -15°C to -25°C/1 year (Do not lower than -25°C)

Formulation Liquid in PBS containing 50% glycerol, 0.5% BSA and 0.02% sodium azide.

Recommended Dilution Ratios

IHC 1:100-1:300

ELISA 1:10000

IF 1:50-200

Basic Information

Clonality Polyclonal

Immunogen Information

Immunogen The antiserum was produced against synthesized peptide derived from human ZC3H4. AA range: 771-820

Specificity ZC3H4 Polyclonal Antibody detects endogenous levels of ZC3H4 protein.

Target Information

Gene name ZC3H4

Protein Name Zinc finger CCCH domain-containing protein 4

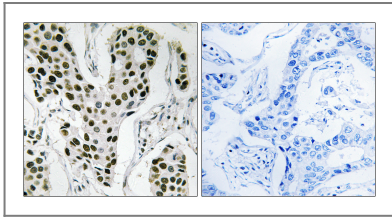
Organism	Gene ID	UniProt ID
Human	23211 ;	Q9UPT8 ;
Mouse	330474 ;	Q6ZPZ3 ;

Cellular Localization Chromosome . Recruited at sites of high RNA polymerase II occupancy. .

Tissue specificity Brain,Epithelium,Uterus,

Function PTM:Phosphorylated upon DNA damage, probably by ATM or ATR.,similarity:Contains 3 C3H1-type zinc fingers.,

Validation Data



Immunohistochemistry analysis of paraffin-embedded human breast carcinoma tissue, using ZC3H4 Antibody. The picture on the right is blocked with the synthesized peptide.

Contact information

Orders: order@immunoway.com
Support: tech@immunoway.com
Telephone: 877-594-3616 (Toll Free), 408-747-0185
Website: <http://www.immunoway.com>
Address: 2200 Ringwood Ave San Jose, CA 95131 USA



Please scan the QR code to access additional product information:
ZC3H4 Rabbit pAb

For Research Use Only. Not for Use in Diagnostic Procedures.

[Antibody](#) | [ELISA Kits](#) | [Protein](#) | [Reagents](#)