

## VEGF-B Rabbit pAb

CatalogNo: YT4871

### Key Features

#### Host Species

- Rabbit

#### Reactivity

- Human, Mouse, Rat

#### Applications

- WB, IHC, IF, ELISA

#### MW

- 21kD (Observed)

#### Isotype

- IgG

### Recommended Dilution Ratios

**WB 1:500-1:2000**

**IHC: 1:100-300**

**ELISA 1:20000**

**IF 1:100-300**

**Not yet tested in other applications.**

### Storage

#### Storage\*

-15°C to -25°C/1 year (Do not lower than -25°C)

#### Formulation

Liquid in PBS containing 50% glycerol, 0.5% BSA and 0.02% sodium azide.

### Basic Information

#### Clonality

Polyclonal

### Immunogen Information

#### Immunogen

The antiserum was produced against synthesized peptide derived from human VEGFB. AA range: 91-140

#### Specificity

VEGF-B Polyclonal Antibody detects endogenous levels of VEGF-B protein.

## Target Information

**Gene name** VEGFB

**Protein Name** Vascular endothelial growth factor B

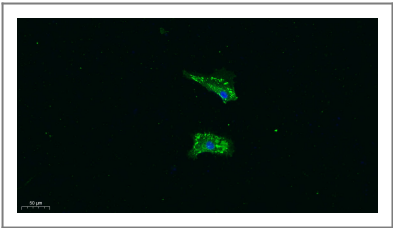
Organism	Gene ID	UniProt ID
Human	<a href="#">7423</a> ;	<a href="#">P49765</a> ;
Mouse	<a href="#">22340</a> ;	<a href="#">P49766</a> ;
Rat	<a href="#">89811</a> ;	<a href="#">O35485</a> ;

**Cellular Localization** Secreted. Secreted but remains associated to cells or to the extracellular matrix unless released by heparin.

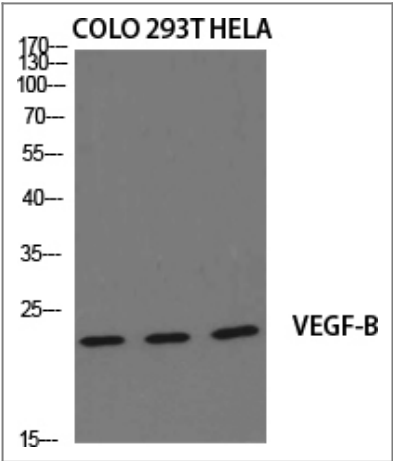
**Tissue specificity** Expressed in all tissues except liver. Highest levels found in heart, skeletal muscle and pancreas.

**Function** Alternative products:Additional isoforms seem to exist,Function:Growth factor for endothelial cells. VEGF-B167 binds heparin and neuropilin-1 whereas the binding to neuropilin-1 of VEGF-B186 is regulated by proteolysis.,PTM:VEGF-B186 is O-glycosylated.,similarity:Belongs to the PDGF/VEGF growth factor family.,subcellular location:Secreted but remains associated to cells or to the extracellular matrix unless released by heparin.,subunit:Homodimer; disulfide-linked. Can also form heterodimer with VEGF.,tissue specificity:Expressed in all tissues except liver. Highest levels found in heart, skeletal muscle and pancreas.,

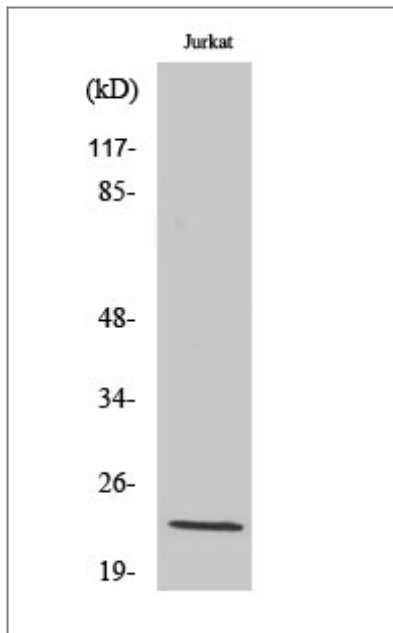
## Validation Data



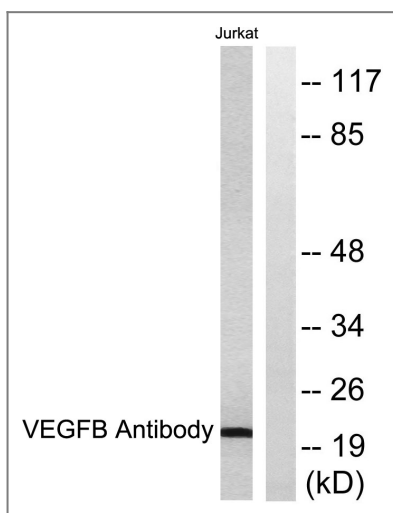
Immunofluorescence analysis of A549. 1,primary Antibody was diluted at 1:200(4°C overnight). 2, Goat Anti Rabbit IgG (H&L) - Alexa Fluor 488 Secondary antibody was diluted at 1:1000(room temperature, 50min).3, DAPI(blue) 10min.



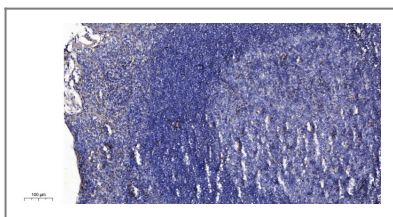
Western Blot analysis of various cells using VEGF-B Polyclonal Antibody diluted at 1:2000. Secondary antibody(catalog#:RS0002) was diluted at 1:20000



Western Blot analysis of Jurkat cells using VEGF-B Polyclonal Antibody diluted at 1:2000. Secondary antibody(catalog#:RS0002) was diluted at 1:20000



Western blot analysis of lysates from Jurkat cells, using VEGFB Antibody. The lane on the right is blocked with the synthesized peptide.



Immunohistochemical analysis of paraffin-embedded human tonsil. 1, Antibody was diluted at 1:200(4° overnight). 2, Tris-EDTA,pH9.0 was used for antigen retrieval. 3,Secondary antibody was diluted at 1:200(room temperature, 30min).

## Contact information

Orders: [order@immunoway.com](mailto:order@immunoway.com)  
 Support: [tech@immunoway.com](mailto:tech@immunoway.com)  
 Telephone: 877-594-3616 (Toll Free), 408-747-0185  
 Website: <http://www.immunoway.com>  
 Address: 2200 Ringwood Ave San Jose, CA 95131 USA



Please scan the QR code to access additional product information:  
**VEGF-B Rabbit pAb**

