

## VAMP-1/2/3 Rabbit pAb

CatalogNo: YT4850

### Key Features

#### Host Species

- Rabbit

#### Reactivity

- Human, Mouse, Rat

#### Applications

- WB, IHC, IF, ELISA

#### MW

- 13kD (Observed)

#### Isotype

- IgG

### Storage

**Storage\*** -15°C to -25°C/1 year (Do not lower than -25°C)

**Formulation** Liquid in PBS containing 50% glycerol, 0.5% BSA and 0.02% sodium azide.

### Recommended Dilution Ratios

**WB 1:500-2000**

**IHC 1:100-1:300**

**ELISA 1:10000**

**IF 1:50-200**

### Basic Information

**Clonality** Polyclonal

### Immunogen Information

**Immunogen** The antiserum was produced against synthesized peptide derived from human VAMP-1/2/3. AA range: 21-70

**Specificity** VAMP-1/2/3 Polyclonal Antibody detects endogenous levels of VAMP-1/2/3 protein.

### Target Information

**Gene name** VAMP1/VAMP2/VAMP3

**Protein Name** Vesicle-associated membrane protein 1/2/3

| Organism | Gene ID   | UniProt ID   |
|----------|---|--|
| Human    | <a href="#">6843</a> ; <a href="#">6844</a> ; <a href="#">9341</a> ;    | <a href="#">P23763</a> ; <a href="#">P63027</a> ; <a href="#">Q15836</a> ; |
| Mouse    | <a href="#">22317</a> ; <a href="#">22318</a> ; <a href="#">22319</a> ; |  |
| Rat      | <a href="#">25624</a> ; <a href="#">24803</a> ; <a href="#">29528</a> ; | <a href="#">Q63666</a> ; <a href="#">P63045</a> ; <a href="#">P63025</a> ; |

**Cellular Localization**

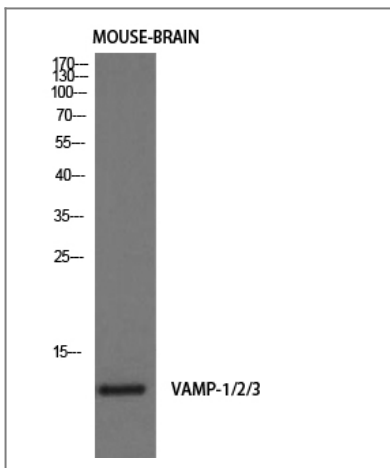
[Isoform 1]: Cytoplasmic vesicle, secretory vesicle, synaptic vesicle membrane ; Single-pass type IV membrane protein . Cell junction, synapse, synaptosome . ; [Isoform 2]: Cytoplasmic vesicle membrane ; Single-pass type IV membrane protein . Cell junction, synapse, synaptosome . ; [Isoform 3]: Mitochondrion outer membrane; Single-pass type IV membrane protein .

**Tissue specificity** Nervous system, skeletal muscle and adipose tissue.

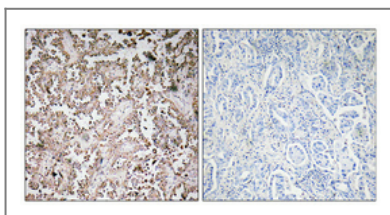
**Function**

Function:Involved in the targeting and/or fusion of transport vesicles to their target membrane.,similarity:Belongs to the synaptobrevin family.,similarity:Contains 1 v-SNARE coiled-coil homology domain.,subunit:Interacts with VAPA and VAPB.,tissue specificity:Nervous system, skeletal muscle and adipose tissue.,

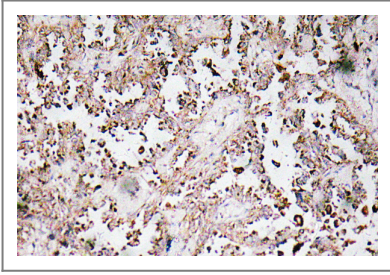
## Validation Data



Western Blot analysis of mouse-brain cells using VAMP-1/2/3 Polyclonal Antibody diluted at 1:1000. Secondary antibody(catalog#:RS0002) was diluted at 1:20000



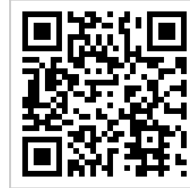
Immunohistochemical analysis of paraffin-embedded Human lung cancer. Antibody was diluted at 1:100(4° overnight). High-pressure and temperature Tris-EDTA,pH8.0 was used for antigen retrieval. Negative contrl (right) obtaned from antibody was pre-absorbed by immunogen peptide.



Immunohistochemistry analysis of VAMP-1/2/3 antibody in paraffin-embedded human lung carcinoma tissue.

## | Contact information

Orders: [order@immunoway.com](mailto:order@immunoway.com)  
Support: [tech@immunoway.com](mailto:tech@immunoway.com)  
Telephone: 877-594-3616 (Toll Free), 408-747-0185  
Website: <http://www.immunoway.com>  
Address: 2200 Ringwood Ave San Jose, CA 95131 USA



Please scan the QR code to access additional product information:  
**VAMP-1/2/3 Rabbit pAb**

---

For Research Use Only. Not for Use in Diagnostic Procedures.

[Antibody](#) | [ELISA Kits](#) | [Protein](#) | [Reagents](#)