

## TDE1 Rabbit pAb

CatalogNo: YT4591

### | Key Features

#### Host Species

- Rabbit

#### Reactivity

- Human, Mouse, Rat

#### Applications

- WB, IHC, IF, ELISA

#### MW

- 52kD (Observed)

#### Isotype

- IgG

### | Recommended Dilution Ratios

**WB 1:500-1:2000**

**IHC 1:100-1:300**

**IF 1:200-1:1000**

**ELISA 1:20000**

**Not yet tested in other applications.**

### | Storage

#### Storage\*

-15°C to -25°C/1 year (Do not lower than -25°C)

#### Formulation

Liquid in PBS containing 50% glycerol, 0.5% BSA and 0.02% sodium azide.

### | Basic Information

#### Clonality

Polyclonal

### | Immunogen Information

#### Immunogen

The antiserum was produced against synthesized peptide derived from human SERC3. AA range: 361-410

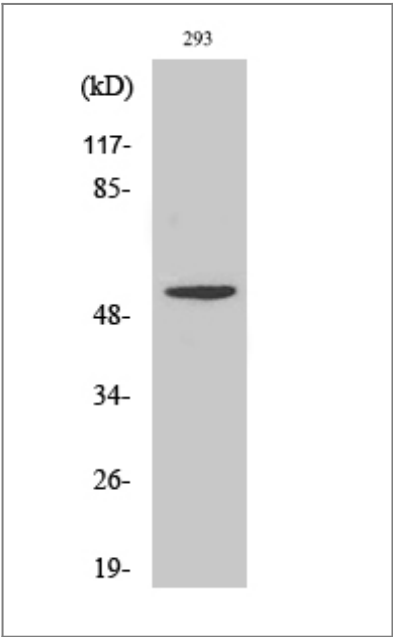
#### Specificity

TDE1 Polyclonal Antibody detects endogenous levels of TDE1 protein.

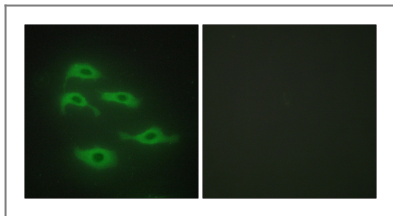
## Target Information

Gene name	SERINC3		
Protein Name	Serine incorporator 3		
	Organism	Gene ID	UniProt ID
	Human	<a href="#">10955</a> ;	<a href="#">Q13530</a> ;
	Mouse	<a href="#">26943</a> ;	<a href="#">Q9QZ19</a> ;
Cellular Localization	Cell membrane ; Multi-pass membrane protein . Golgi apparatus membrane ; Multi-pass membrane protein .; Cytoplasm, perinuclear region . (Microbial infection) Upon HIV-1 infection, it is redirected to perinuclear region following interaction with HIV-1 Nef, excluding it from virions particles, thereby preventing subsequent antiviral defense activity (Probable). .		
Tissue specificity	Ubiquitous. Expression levels were increased fourfold to tenfold in lung tumor tissues compared with normal pulmonary tissues.		
Function	Function:May be involved in cellular transformation.,PTM:N-glycosylated.,similarity:Belongs to the TDE1 family.,tissue specificity:Ubiquitous. Expression levels were increased fourfold to tenfold in lung tumor tissues compared with normal pulmonary tissues.,		

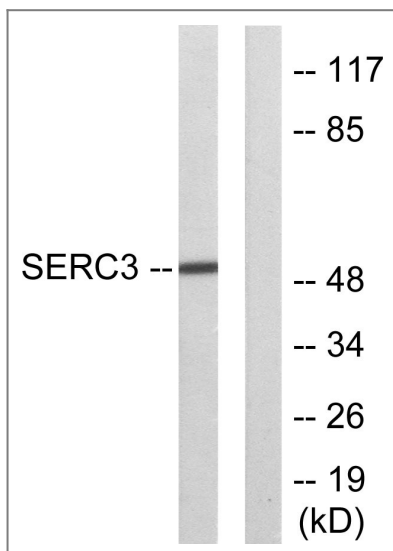
## Validation Data



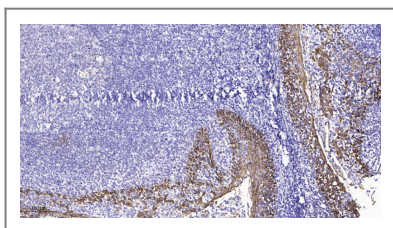
Western Blot analysis of various cells using TDE1 Polyclonal Antibody



Immunofluorescence analysis of HepG2 cells, using SERC3 Antibody. The picture on the right is blocked with the synthesized peptide.



Western blot analysis of lysates from 293 cells, using SERC3 Antibody. The lane on the right is blocked with the synthesized peptide.



Immunohistochemical analysis of paraffin-embedded human tonsil. 1, Antibody was diluted at 1:200(4° overnight). 2, Tris-EDTA,pH9.0 was used for antigen retrieval. 3,Secondary antibody was diluted at 1:200(room temperature, 45min).

## Contact information

Orders: [order@immunoway.com](mailto:order@immunoway.com)  
 Support: [tech@immunoway.com](mailto:tech@immunoway.com)  
 Telephone: 877-594-3616 (Toll Free), 408-747-0185  
 Website: <http://www.immunoway.com>  
 Address: 2200 Ringwood Ave San Jose, CA 95131 USA



Please scan the QR code to access additional product information:  
**TDE1 Rabbit pAb**

For Research Use Only. Not for Use in Diagnostic Procedures.

[Antibody](#) | [ELISA Kits](#) | [Protein](#) | [Reagents](#)