

TBX2/3 Rabbit pAb

CatalogNo: YT4569

Key Features

Host Species

- Rabbit

Reactivity

- Human, Mouse, Rat

Applications

- WB, ELISA

MW

- 79kD (Observed)

Isotype

- IgG

Storage

Storage* -15°C to -25°C/1 year (Do not lower than -25°C)

Formulation Liquid in PBS containing 50% glycerol, 0.5% BSA and 0.02% sodium azide.

Recommended Dilution Ratios

WB 1:500-1:2000

ELISA 1:20000

Not yet tested in other applications.

Basic Information

Clonality Polyclonal

Immunogen Information

Immunogen The antiserum was produced against synthesized peptide derived from human TBX3. AA range: 271-320

Specificity TBX2/3 Polyclonal Antibody detects endogenous levels of TBX2/3 protein.

Target Information

Gene name TBX2/TBX3

Protein Name T-box transcription factor TBX2/3

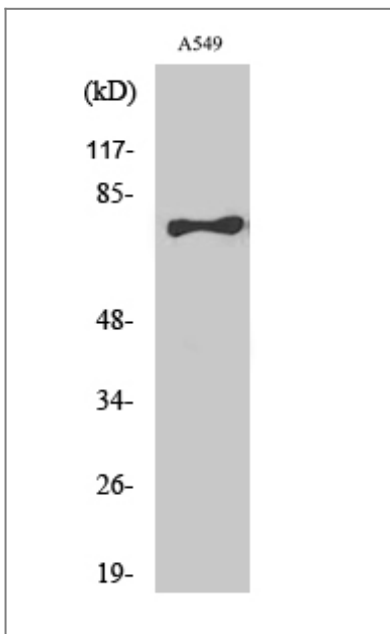
Organism	Gene ID	UniProt ID
Human	6926 ;	O15119 ; Q13207 ;
Mouse	21386 ; 21385 ;	
Rat	353305 ;	Q7TST9 ;

Cellular Localization Nucleus .

Tissue specificity Widely expressed.

Function Disease:Defects in TBX3 are the cause of ulnar-mammary syndrome (UMS) [MIM:181450]. UMS is characterized by ulnar ray defects, obesity, hypogenitalism, delayed puberty, hypoplasia of nipples and apocrine glands.,Function:Transcriptional repressor involved in developmental processes. Probably plays a role in limb pattern formation.,similarity:Contains 1 T-box DNA-binding domain.,tissue specificity:Widely expressed.,

Validation Data



Western Blot analysis of various cells using TBX2/3 Polyclonal Antibody

Contact information

Orders: order@immunoway.com
Support: tech@immunoway.com
Telephone: 877-594-3616 (Toll Free), 408-747-0185
Website: http://www.immunoway.com
Address: 2200 Ringwood Ave San Jose, CA 95131 USA



Please scan the QR code
to access additional
product information:
TBX2/3 Rabbit pAb

For Research Use Only. Not for Use in Diagnostic Procedures.

[Antibody](#) | [ELISA Kits](#) | [Protein](#) | [Reagents](#)