

T2R3 Rabbit pAb

CatalogNo: YT4508

Key Features

Host Species

- Rabbit

Reactivity

- Human, Mouse, Rat

Applications

- IF, ELISA

MW

- 36kD (Calculated)

Isotype

- IgG

Storage

Storage* -15°C to -25°C/1 year (Do not lower than -25°C)

Formulation Liquid in PBS containing 50% glycerol, 0.5% BSA and 0.02% sodium azide.

Recommended Dilution Ratios

IF 1:200-1:1000

ELISA 1:20000

Not yet tested in other applications

Basic Information

Clonality Polyclonal

Immunogen Information

Immunogen The antiserum was produced against synthesized peptide derived from human TAS2R3. AA range:140-189

Specificity T2R3 Polyclonal Antibody detects endogenous levels of T2R3 protein.

Target Information

Gene name TAS2R3

Protein Name Taste receptor type 2 member 3

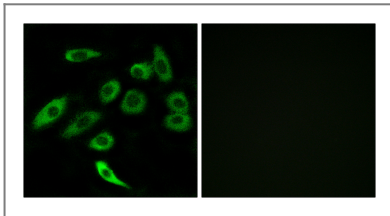
Organism	Gene ID	UniProt ID
Human	50831 ;	Q9NYW6 ;
Mouse		Q7TQA7 ;

Cellular Localization Membrane; Multi-pass membrane protein.

Tissue specificity Expressed in subsets of taste receptor cells of the tongue and palate epithelium and exclusively in gustducin-positive cells. Expressed in the antrum and fundus (part of the stomach), duodenum and in gastric endocrine cells.

Function Function:Gustducin-coupled receptor implicated in the perception of bitter compounds in the oral cavity and the gastrointestinal tract. Signals through PLCB2 and the calcium-regulated cation channel TRPM5.,miscellaneous:Several bitter taste receptors are expressed in a single taste receptor cell.,similarity:Belongs to the G-protein coupled receptor T2R family.,tissue specificity:Expressed in subsets of taste receptor cells of the tongue and palate epithelium and exclusively in gustducin-positive cells. Expressed in the antrum and fundus (part of the stomach), duodenum and in gastric endocrine cells.,

Validation Data



Immunofluorescence analysis of A549 cells, using TAS2R3 Antibody. The picture on the right is blocked with the synthesized peptide.

Contact information

Orders: order@immunoway.com
Support: tech@immunoway.com
Telephone: 877-594-3616 (Toll Free), 408-747-0185
Website: <http://www.immunoway.com>
Address: 2200 Ringwood Ave San Jose, CA 95131 USA



Please scan the QR code to access additional product information:
T2R3 Rabbit pAb