

SR-6 Rabbit pAb

CatalogNo: YT4408

Key Features

Host Species

- Rabbit

Reactivity

- Human, Mouse, Rat

Applications

- WB, ELISA

MW

- 47kD (Observed)

Isotype

- IgG

Storage

Storage* -15°C to -25°C/1 year (Do not lower than -25°C)

Formulation Liquid in PBS containing 50% glycerol, 0.5% BSA and 0.02% sodium azide.

Recommended Dilution Ratios

WB 1:500-1:2000

ELISA 1:20000

Not yet tested in other applications.

Basic Information

Clonality Polyclonal

Immunogen Information

Immunogen The antiserum was produced against synthesized peptide derived from human 5-HT-6. AA range: 221-270

Specificity SR-6 Polyclonal Antibody detects endogenous levels of SR-6 protein.

Target Information

Gene name HTR6

Protein Name 5-hydroxytryptamine receptor 6

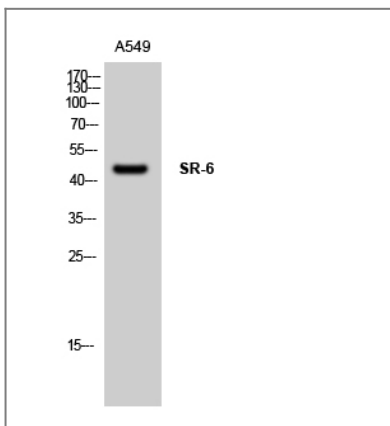
Organism	Gene ID	UniProt ID
Human	3362 ;	P50406 ;
Mouse	15565 ;	Q9R1C8 ;
Rat	64354 ;	P31388 ;

Cellular Localization Cell membrane; Multi-pass membrane protein.

Tissue specificity Expressed in several human brain regions, most prominently in the caudate nucleus.

Function Function:This is one of the several different receptors for 5-hydroxytryptamine (serotonin), a biogenic hormone that functions as a neurotransmitter, a hormone, and a mitogen. The activity of this receptor is mediated by G proteins that stimulate adenylate cyclase. It has a high affinity for tricyclic psychotropic drugs.,similarity:Belongs to the G-protein coupled receptor 1 family.,tissue specificity:Expressed in several human brain regions, most prominently in the caudate nucleus.,

Validation Data



Western Blot analysis of A549 cells using SR-6 Polyclonal Antibody

Contact information

Orders: order@immunoway.com
Support: tech@immunoway.com
Telephone: 877-594-3616 (Toll Free), 408-747-0185
Website: <http://www.immunoway.com>
Address: 2200 Ringwood Ave San Jose, CA 95131 USA



Please scan the QR code to access additional product information:
SR-6 Rabbit pAb

