

## SKI-1 Rabbit pAb

CatalogNo: YT4309

### Key Features

#### Host Species

- Rabbit

#### Reactivity

- Human, Mouse, Rat

#### Applications

- WB, ELISA, IHC

#### MW

- 130kD (Observed)

#### Isotype

- IgG

### Recommended Dilution Ratios

WB 1:500-2000

IHC 1:50-300

ELISA 1:2000-20000

### Storage

**Storage\*** -15°C to -25°C/1 year (Do not lower than -25°C)

**Formulation** Liquid in PBS containing 50% glycerol, 0.5% BSA and 0.02% sodium azide.

### Basic Information

**Clonality** Polyclonal

### Immunogen Information

**Immunogen** Synthesized peptide derived from SKI-1 . at AA range: 180-260

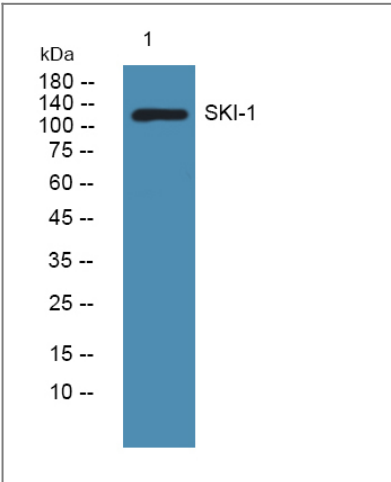
**Specificity** SKI-1 Polyclonal Antibody detects endogenous levels of SKI-1 protein.

### Target Information

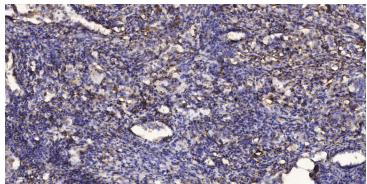
**Gene name** MBTPS1

<b>Protein Name</b>	Membrane-bound transcription factor site-1 protease		
	<b>Organism</b>	<b>Gene ID</b>	<b>UniProt ID</b>
	Human	<a href="#">8720;</a>	<a href="#">Q14703;</a>
	Mouse	<a href="#">56453;</a>	<a href="#">Q9WTZ2;</a>
	Rat	<a href="#">89842;</a>	<a href="#">Q9WTZ3;</a>
<b>Cellular Localization</b>	Endoplasmic reticulum membrane ; Single-pass type I membrane protein . Golgi apparatus membrane ; Single-pass type I membrane protein . May sort to other organelles, including lysosomal and/or endosomal compartments. .		
<b>Tissue specificity</b>	Widely expressed.		
<b>Function</b>	Catalytic activity:Processes precursors containing basic and hydrophobic/aliphatic residues at P4 and P2, respectively, with a relatively relaxed acceptance of amino acids at P1 and P3.,cofactor:Calcium.,enzyme regulation:Inhibited by divalent copper and zinc ions, but not by nickel or cobalt. Inhibited by its prosegment, but not smaller fragments thereof.,Function:Catalyzes the first step in the proteolytic activation of the sterol regulatory element-binding proteins (SREBPs). Other known substrates are BDNF and ATF6. Cleaves after hydrophobic or small residues, provided that Arg or Lys is in position P4. Cleaves known substrates after Arg-Ser-Val-Leu (SERBP-2), Arg-His-Leu-Leu (ATF6), Arg-Gly-Leu-Thr (BDNF) and its own propeptide after Arg-Arg-Leu-Leu.,induction:Down-regulated by sterols.,PTM:The 148 kDa zymogen is processed progressively into two membrane-bound 120 and 106 kDa forms in the endoplasmic reticulum, and late into a secreted 98 kDa form. The propeptide is autocatalytically removed through an intramolecular cleavage after Leu-186. Further cleavage generates 14, 10, and 8kDa intermediates.,similarity:Belongs to the peptidase S8 family.,subcellular location:May sort to other organelles, including lysosomal and/or endosomal compartments.,tissue specificity:Widely expressed.,		

Validation Data



Western blot analysis of lysates from HCT116 cells, primary antibody was diluted at 1:1000, 4°over night



Immunohistochemical analysis of paraffin-embedded human Squamous cell carcinoma of lung. 1, Antibody was diluted at 1:200(4° overnight). 2, Tris-EDTA,pH9.0 was used for antigen retrieval. 3,Secondary antibody was diluted at 1:200(room temperature, 45min).

## | Contact information

Orders: [order@immunoway.com](mailto:order@immunoway.com)  
Support: [tech@immunoway.com](mailto:tech@immunoway.com)  
Telephone: 877-594-3616 (Toll Free), 408-747-0185  
Website: <http://www.immunoway.com>  
Address: 2200 Ringwood Ave San Jose, CA 95131 USA



Please scan the QR code  
to access additional  
product information:

**SKI-1 Rabbit pAb**

---

For Research Use Only. Not for Use in Diagnostic Procedures.

[Antibody](#) | [ELISA Kits](#) | [Protein](#) | [Reagents](#)