

# Ribosomal Protein S15 Rabbit pAb

CatalogNo: YT4124

## Key Features

### Host Species

- Rabbit

### Reactivity

- Human, Mouse, Rat

### Applications

- WB, ELISA, IHC

### MW

- 17kD (Observed)

### Isotype

- IgG

## Storage

**Storage\*** -15°C to -25°C/1 year (Do not lower than -25°C)

**Formulation** Liquid in PBS containing 50% glycerol, 0.5% BSA and 0.02% sodium azide.

## Recommended Dilution Ratios

**WB 1:500-2000**

**IHC 1:50-300**

**ELISA 1:2000-20000**

## Basic Information

**Clonality** Polyclonal

## Immunogen Information

**Immunogen** The antiserum was produced against synthesized peptide derived from human RPS15. AA range:41-90

**Specificity** Ribosomal Protein S15 Polyclonal Antibody detects endogenous levels of Ribosomal Protein S15 protein.

## Target Information

**Gene name** RPS15

**Protein Name** 40S ribosomal protein S15

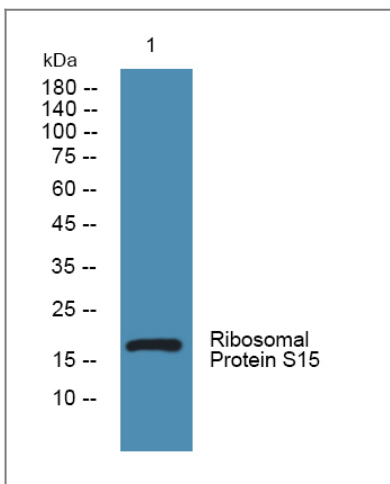
Organism	Gene ID	UniProt ID
Human	<a href="#">6209;</a>	<a href="#">P62841;</a>
Mouse	<a href="#">20054;</a>	<a href="#">P62843;</a>
Rat	<a href="#">29285;</a>	<a href="#">P62845;</a>

**Cellular Localization** nucleus,nucleoplasm,cytoplasm,cytosol,ribosome,focal adhesion,small ribosomal subunit,membrane,cytosolic small ribosomal subunit,

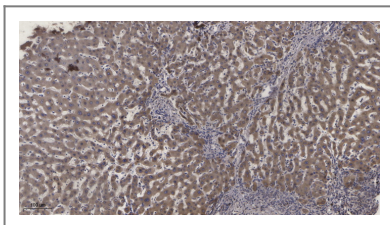
**Tissue specificity** Pancreas,Placenta,

**Function** similarity:Belongs to the ribosomal protein S19P family.,

## Validation Data



Western blot analysis of lysates from K562 cells, primary antibody was diluted at 1:1000, 4°C over night



Immunohistochemical analysis of paraffin-embedded human liver cancer. 1, Antibody was diluted at 1:200 (4°C overnight). 2, Tris-EDTA,pH9.0 was used for antigen retrieval. 3,Secondary antibody was diluted at 1:200 (room temperature, 45min).

## Contact information

Orders: order@immunoway.com  
Support: tech@immunoway.com  
Telephone: 877-594-3616 (Toll Free), 408-747-0185  
Website: http://www.immunoway.com  
Address: 2200 Ringwood Ave San Jose, CA 95131 USA



Please scan the QR code  
to access additional  
product information:  
**Ribosomal Protein  
S15 Rabbit pAb**

---

For Research Use Only. Not for Use in Diagnostic Procedures.

[Antibody](#) | [ELISA Kits](#) | [Protein](#) | [Reagents](#)