

Ribosomal Protein L36 Rabbit pAb

CatalogNo: YT4110

Key Features

Host Species

- Rabbit

Reactivity

- Human, Mouse, Rat

Applications

- WB, IHC, IF, ELISA

MW

- 12kD (Observed)

Isotype

- IgG

Storage

Storage* -15°C to -25°C/1 year (Do not lower than -25°C)

Formulation Liquid in PBS containing 50% glycerol, 0.5% BSA and 0.02% sodium azide.

Recommended Dilution Ratios

WB 1:500-1:2000

IHC 1:100-1:300

IF 1:200-1:1000

ELISA 1:40000

Not yet tested in other applications.

Basic Information

Clonality Polyclonal

Immunogen Information

Immunogen The antiserum was produced against synthesized peptide derived from human RPL36. AA range:51-100

Specificity Ribosomal Protein L36 Polyclonal Antibody detects endogenous levels of Ribosomal Protein L36 protein.

Target Information

Gene name RPL36

Protein Name 60S ribosomal protein L36

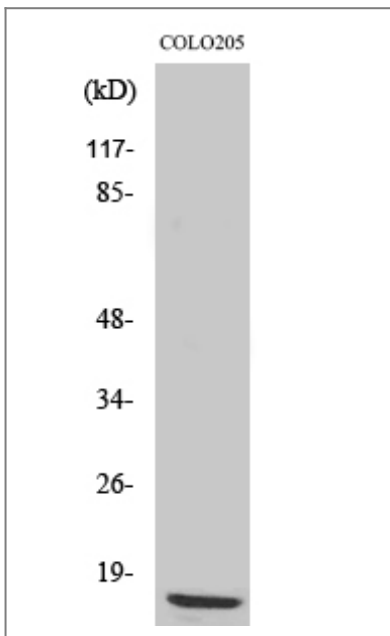
Organism	Gene ID	UniProt ID
Human	25873;	Q9Y3U8;
Mouse		P47964;
Rat	58927;	P39032;

Cellular Localization Cytoplasm, cytosol . Cytoplasm . Detected on cytosolic polysomes (PubMed:25957688). .

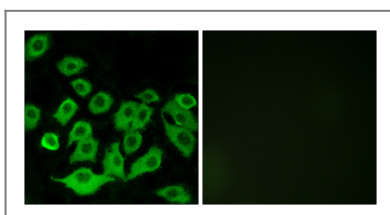
Tissue specificity Blood,Kidney,Lung carcinoma,Skin,Umbilical cord blood,

Function Caution:Could be the product of a pseudogene.,similarity:Belongs to the ribosomal protein L36e family.,

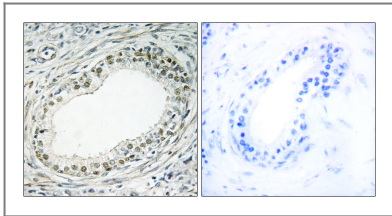
Validation Data



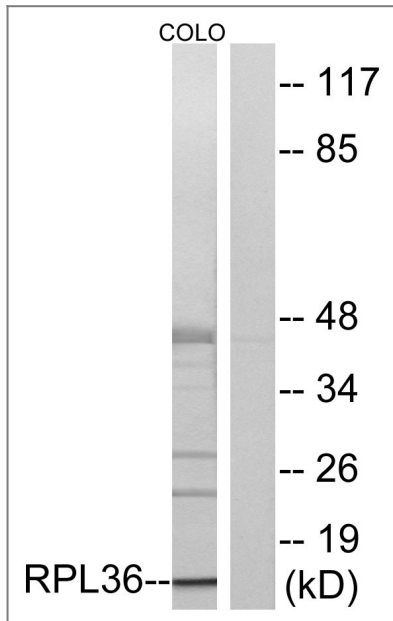
Western Blot analysis of various cells using Ribosomal Protein L36 Polyclonal Antibody diluted at 1:500



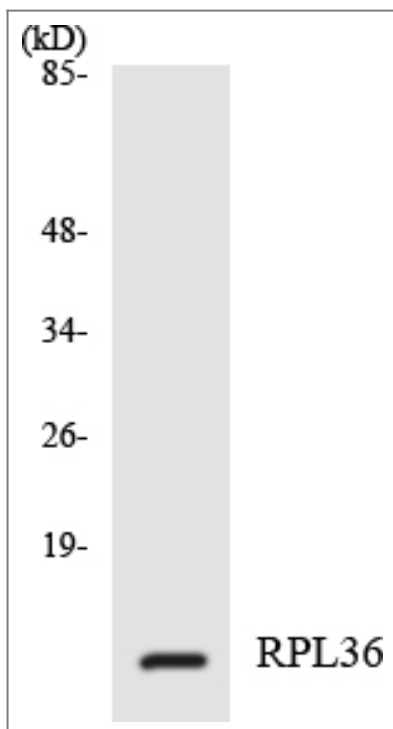
Immunofluorescence analysis of A549 cells, using RPL36 Antibody. The picture on the right is blocked with the synthesized peptide.



Immunohistochemistry analysis of paraffin-embedded human prostate carcinoma tissue, using RPL36 Antibody. The picture on the right is blocked with the synthesized peptide.



Western blot analysis of lysates from COLO cells, using RPL36 Antibody. The lane on the right is blocked with the synthesized peptide.



Western blot analysis of the lysates from 293 cells using RPL36 antibody.

| Contact information

Orders: order@immunoway.com
Support: tech@immunoway.com
Telephone: 877-594-3616 (Toll Free), 408-747-0185
Website: http://www.immunoway.com
Address: 2200 Ringwood Ave San Jose, CA 95131 USA



Please scan the QR code to access additional product information:
Ribosomal Protein L36 Rabbit pAb

For Research Use Only. Not for Use in Diagnostic Procedures.

[Antibody](#) | [ELISA Kits](#) | [Protein](#) | [Reagents](#)