

## Ribosomal Protein L17 Rabbit pAb

CatalogNo: YT4098

Orthogonal Validated 

### Key Features

**Host Species**

- Rabbit

**Reactivity**

- Human, Mouse, Rat, Monkey, Cat

**Applications**

- WB, IHC, IF, ELISA

**MW**

- 24kD (Observed)

**Isotype**

- IgG

### Recommended Dilution Ratios

**WB 1:500-1:2000****IHC 1:100-1:300****ELISA 1:10000****IF 1:50-200**

### Storage

**Storage\***

-15°C to -25°C/1 year(Do not lower than -25°C)

**Formulation**

Liquid in PBS containing 50% glycerol, 0.5% BSA and 0.02% sodium azide.

### Basic Information

**Clonality**

Polyclonal

### Immunogen Information

**Immunogen**

The antiserum was produced against synthesized peptide derived from human RPL17. AA range:101-150

**Specificity**

Ribosomal Protein L17 Polyclonal Antibody detects endogenous levels of Ribosomal Protein L17 protein.

## | Target Information

**Gene name** RPL17

**Protein Name** 60S ribosomal protein L17

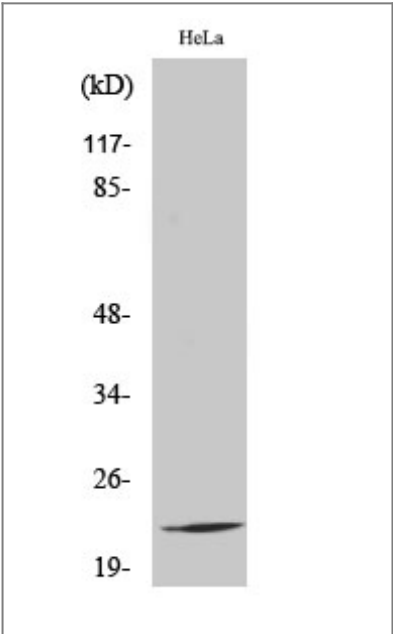
Organism	Gene ID	UniProt ID
Human	<a href="#">6139</a> ;	<a href="#">P18621</a> ;
Mouse		<a href="#">Q9CPR4</a> ;
Rat	<a href="#">291434</a> ;	<a href="#">P24049</a> ;

**Cellular Localization** nucleus,cytosol,large ribosomal subunit,cytosolic large ribosomal subunit,

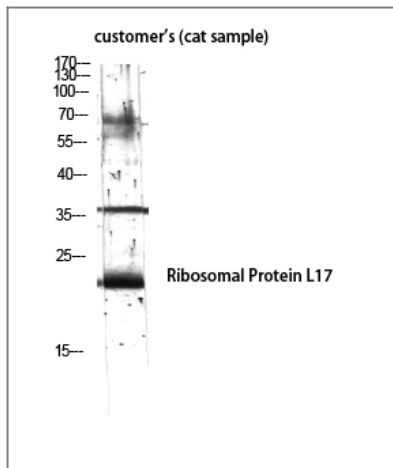
**Tissue specificity** Expressed in pancreas, lung, colon, cystic duct, gall bladder, kidney and liver. Expressed at high levels in the well differentiated pancreatic tumor cell lines HPAF, COLO 357 and Capan-1, the moderately differentiated pancreatic tumor cell lines T3M-4, AsPc-1 and BxPc-3, the poorly differentiated pancreatic tumor cell line MIA PaCa-2, and the pancreatic tumor cell lines of undefined differentiation status such as SW979. Expressed at lower levels in the poorly differentiated pancreatic tumor cell lines HCG-25 and PANC-1.

**Function** similarity:Belongs to the ribosomal protein L22P family.,tissue specificity:Expressed in pancreas, lung, colon, cystic duct, gall bladder, kidney and liver. Expressed at high levels in the well differentiated pancreatic tumor cell lines HPAF, Colo 357 and Capan-1, the moderately differentiated pancreatic tumor cell lines T3M4, AsPc-1 and BxPc-3, the poorly differentiated pancreatic tumor cell line Mia Paca, and the pancreatic tumor cell lines of undefined differentiation status Panc 89 and SW 979. Expressed at lower levels in the poorly differentiated pancreatic tumor cell lines HGC 25 and Panc 1.,

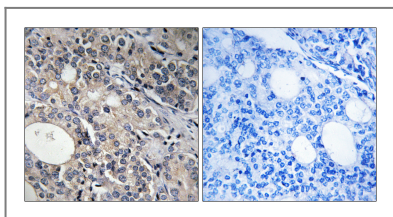
## | Validation Data



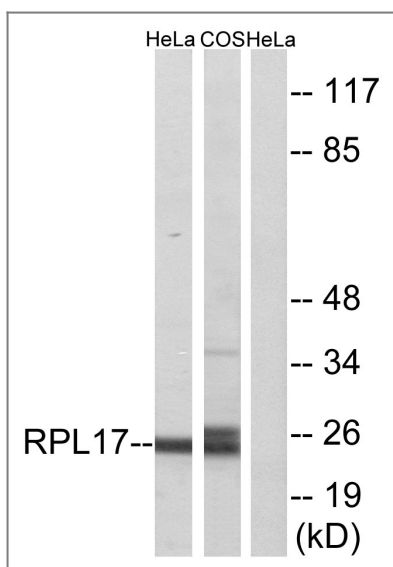
Western Blot analysis of various cells using Ribosomal Protein L17 Polyclonal Antibody diluted at 1:2000



Western Blot analysis of customer's (cat sample) using Ribosomal Protein L17 Polyclonal Antibody diluted at 1:2000



Immunohistochemistry analysis of paraffin-embedded human prostate carcinoma tissue, using RPL17 Antibody. The picture on the right is blocked with the synthesized peptide.



Western blot analysis of lysates from HeLa and COS7 cells, using RPL17 Antibody. The lane on the right is blocked with the synthesized peptide.

## Contact information

Orders: [order@immunoway.com](mailto:order@immunoway.com)  
 Support: [tech@immunoway.com](mailto:tech@immunoway.com)  
 Telephone: 877-594-3616 (Toll Free), 408-747-0185  
 Website: <http://www.immunoway.com>  
 Address: 2200 Ringwood Ave San Jose, CA 95131 USA



Please scan the QR code to access additional product information:  
**Ribosomal Protein L17 Rabbit pAb**