

Repac Rabbit pAb

CatalogNo: YT4051

Key Features

Host Species

- Rabbit

Reactivity

- Human, Mouse, Rat

Applications

- WB, IHC

MW

- 60kD (Observed)

Isotype

- IgG

Storage

Storage* -15°C to -25°C/1 year (Do not lower than -25°C)

Formulation Liquid in PBS containing 50% glycerol, 0.5% BSA and 0.02% sodium azide.

Recommended Dilution Ratios

WB 1:500-2000

IHC 1:50-300

Basic Information

Clonality Polyclonal

Immunogen Information

Immunogen The antiserum was produced against synthesized peptide derived from human RAPGEF5. AA range: 431-480

Specificity Repac Polyclonal Antibody detects endogenous levels of Repac protein.

Target Information

Gene name RAPGEF5

Protein Name Rap guanine nucleotide exchange factor 5

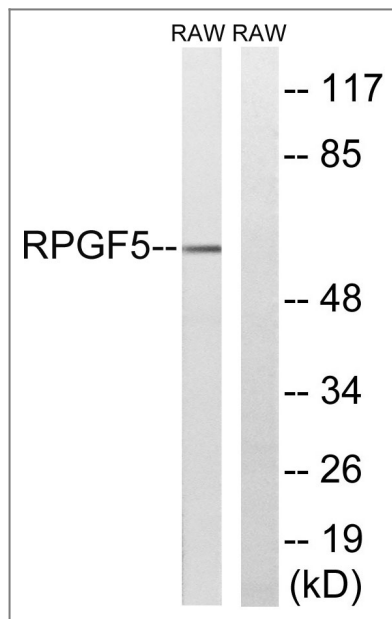
| Organism | Gene ID | UniProt ID |
|----------|--------------------------|--------------------------|
| Human | 9771 ; | Q92565 ; |
| Mouse | 217944 ; | Q8C0Q9 ; |
| Rat | 362799 ; | P83900 ; |

Cellular Localization Nucleus.

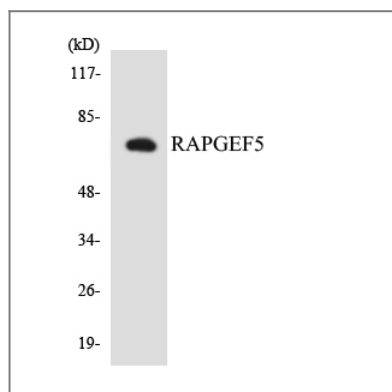
Tissue specificity Widely expressed with highest levels in brain.

Function Function:Guanine nucleotide exchange factor (GEF) for RAP1A, RAP2A and MRAS/M-Ras-GTP. Its association with MRAS inhibits Rap1 activation.,similarity:Contains 1 N-terminal Ras-GEF domain.,similarity:Contains 1 Ras-GEF domain.,tissue specificity:Widely expressed with highest levels in brain.,

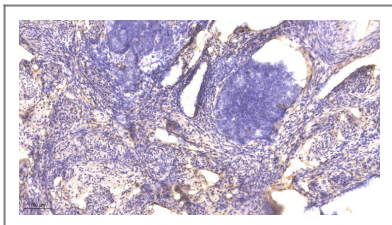
Validation Data



Western blot analysis of lysates from RAW264.7 cells, using RAPGEF5 Antibody. The lane on the right is blocked with the synthesized peptide.



Western blot analysis of the lysates from COLO205 cells using RAPGEF5 antibody.



Immunohistochemical analysis of paraffin-embedded human cervical carcinoma. 1, Antibody was diluted at 1:200 (4°C overnight). 2, Tris-EDTA, pH 9.0 was used for antigen retrieval. 3, Secondary antibody was diluted at 1:200 (room temperature, 45min).

| Contact information

Orders: order@immunoway.com
Support: tech@immunoway.com
Telephone: 877-594-3616 (Toll Free), 408-747-0185
Website: <http://www.immunoway.com>
Address: 2200 Ringwood Ave San Jose, CA 95131 USA



Please scan the QR code to access additional product information:
Repac Rabbit pAb

For Research Use Only. Not for Use in Diagnostic Procedures.

[Antibody](#) | [ELISA Kits](#) | [Protein](#) | [Reagents](#)