

## RBBP5 Rabbit pAb

CatalogNo: YT4029

### Key Features

#### Host Species

- Rabbit

#### Reactivity

- Human, Mouse, Rat

#### Applications

- WB, IHC

#### MW

- 59kD (Observed)

#### Isotype

- IgG

### Storage

#### Storage\*

-15°C to -25°C/1 year (Do not lower than -25°C)

#### Formulation

Liquid in PBS containing 50% glycerol, 0.5% BSA and 0.02% sodium azide.

### Recommended Dilution Ratios

WB 1:500-2000

IHC 1:50-300

### Basic Information

#### Clonality

Polyclonal

### Immunogen Information

#### Immunogen

Synthesized peptide derived from RBQ-3 . at AA range: 190-270

#### Specificity

RBQ-3 Polyclonal Antibody detects endogenous levels of RBQ-3 protein.

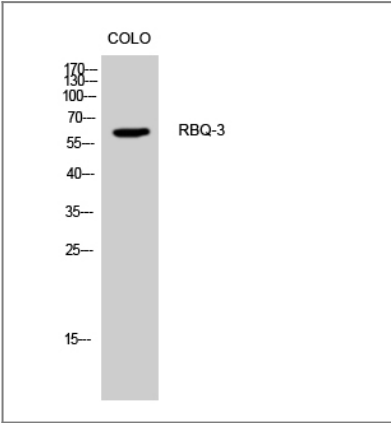
### Target Information

#### Gene name

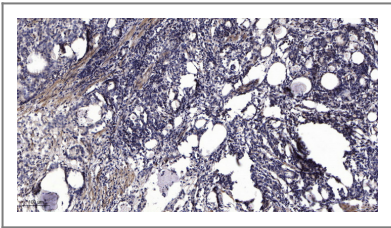
RBBP5

Protein Name	Retinoblastoma-binding protein 5		
	Organism	Gene ID	UniProt ID
	Human	<a href="#">5929;</a>	<a href="#">Q15291;</a>
	Mouse	<a href="#">213464;</a>	<a href="#">Q8BX09;</a>
Cellular Localization	Nucleus .		
Tissue specificity	Ubiquitously expressed.		
Function	Function: Binds preferentially to underphosphorylated retinoblastoma protein.,PTM: Phosphorylated upon DNA damage, probably by ATM or ATR.,similarity: Contains 6 WD repeats.,subunit: Component of the SET1 complex, at least composed of the catalytic subunit (SETD1A or SETD1B), WDR5, WDR82, RBBP5, ASH2/ASH2L and CXXC1/CFP1. Component of MLL-containing complexes (named MLL, ASCOM, MLL2/MLL3 or MLL3/MLL4 complex): at least composed ASH2L, RBBP5, DPY30, WDR5, one or several histone methyltransferases (MLL, MLL2, MLL3 and/or MLL4), and the facultative components MEN1, HCFC1, HCFC2, NCOA6, KDM6A, PAXIP1/PTIP and C16orf53/PA1.,tissue specificity: Ubiquitously expressed.,		

Validation Data



Western Blot analysis of CoLo cells using RBQ-3 Polyclonal Antibody cells nucleus extracted by Minute TM Cytoplasmic and Nuclear Fractionation kit (SC-003, Invent biotech, MN, USA).



Immunohistochemical analysis of paraffin-embedded human Gastric adenocarcinoma. 1, Antibody was diluted at 1:200(4° overnight). 2, Tris-EDTA,pH9.0 was used for antigen retrieval. 3,Secondary antibody was diluted at 1:200(room temperature, 45min).

Contact information

Orders: order@immunoway.com  
Support: tech@immunoway.com  
Telephone: 877-594-3616 (Toll Free), 408-747-0185  
Website: <http://www.immunoway.com>  
Address: 2200 Ringwood Ave San Jose, CA 95131 USA



Please scan the QR code  
to access additional  
product information:  
**RBBP5 Rabbit pAb**

---

For Research Use Only. Not for Use in Diagnostic Procedures.

[Antibody](#) | [ELISA Kits](#) | [Protein](#) | [Reagents](#)