

pHyde Rabbit pAb

CatalogNo: YT3707

Key Features

Host Species

- Rabbit

Reactivity

- Human, Mouse, Rat

Applications

- WB, IHC, IF, ELISA

MW

- 54kD (Observed)

Isotype

- IgG

Storage

Storage* -15°C to -25°C/1 year (Do not lower than -25°C)

Formulation Liquid in PBS containing 50% glycerol, 0.5% BSA and 0.02% sodium azide.

Recommended Dilution Ratios

WB 1:500-1:2000

IHC 1:100-1:300

IF 1:200-1:1000

ELISA 1:10000

Not yet tested in other applications.

Basic Information

Clonality Polyclonal

Immunogen Information

Immunogen The antiserum was produced against synthesized peptide derived from human STEA3. AA range:421-470

Specificity pHyde Polyclonal Antibody detects endogenous levels of pHyde protein.

| Target Information

Gene name STEAP3

Protein Name Metalloreductase STEAP3

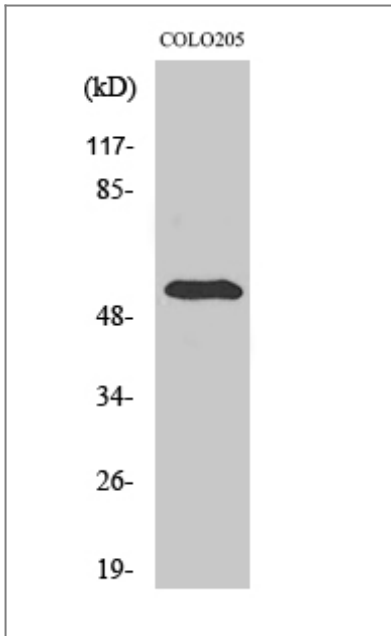
Organism	Gene ID	UniProt ID
Human	55240 ;	Q658P3 ;
Mouse	68428 ;	Q8CI59 ;
Rat	170824 ;	Q5RKL5 ;

Cellular Localization Endosome membrane ; Multi-pass membrane protein . Localizes to vesicular-like structures at the plasma membrane and around the nucleus.

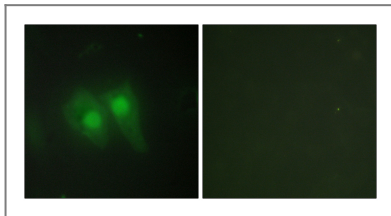
Tissue specificity Expressed in adult bone marrow, placenta, liver, skeletal muscle and pancreas. Down-regulated in hepatocellular carcinoma.

Function Caution:Was initially thought to have tumor suppressor function in prostate cancer. However, it was shown that it is probably not the case (PubMed:12866033).,cofactor:FAD.,Function:Endosomal ferrireductase required for efficient transferrin-dependent iron uptake in erythroid cells. Participates in erythroid iron homeostasis by reducing Fe(3+) to Fe(2+). Can also reduce of Cu(2+) to Cu(1+), suggesting that it participates in copper homeostasis. Uses NAD(+) as acceptor (By similarity). May play a role downstream of p53/TP53 to interface apoptosis and cell cycle progression. Indirectly involved in exosome secretion by facilitating the secretion of proteins such as TCTP.,induction:By p53/TP53.,similarity:Belongs to the STEAP family.,similarity:Contains 1 ferric oxidoreductase domain.,subcellular location:Localizes to vesicular-like structures at the plasma membrane and around the nucleus.,subunit:Interacts with BNIP3L, MYT1 and TCTP.,tissue specificity:Expressed in adult bone marrow, placenta, liver, skeletal muscle and pancreas. Down-regulated in hepatocellular carcinoma.,

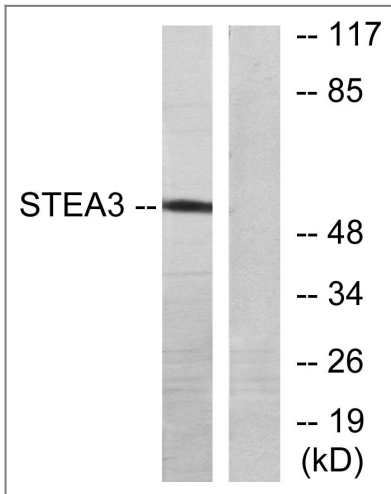
| Validation Data



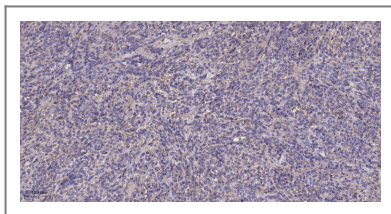
Western Blot analysis of various cells using pHyde Polyclonal Antibody



Immunofluorescence analysis of HeLa cells, using STEA3 Antibody. The picture on the right is blocked with the synthesized peptide.



Western blot analysis of lysates from COLO205 cells, using STEA3 Antibody. The lane on the right is blocked with the synthesized peptide.



Immunohistochemical analysis of paraffin-embedded human Colon cancer. 1, Antibody was diluted at 1:200 (4°C overnight). 2, Tris-EDTA, pH9.0 was used for antigen retrieval. 3, Secondary antibody was diluted at 1:200 (room temperature, 45min).

| Contact information

Orders: order@immunoway.com
Support: tech@immunoway.com
Telephone: 877-594-3616 (Toll Free), 408-747-0185
Website: http://www.immunoway.com
Address: 2200 Ringwood Ave San Jose, CA 95131 USA



Please scan the QR code
to access additional
product information:
pHyde Rabbit pAb

For Research Use Only. Not for Use in Diagnostic Procedures.

[Antibody](#) | [ELISA Kits](#) | [Protein](#) | [Reagents](#)