

PC-PLD2 Rabbit pAb

CatalogNo: YT3620

Key Features

Host Species

- Rabbit

Reactivity

- Human, Mouse, Rat

Applications

- WB, ELISA, IHC

MW

- 106kD (Observed)

Isotype

- IgG

Storage

Storage* -15°C to -25°C/1 year (Do not lower than -25°C)

Formulation Liquid in PBS containing 50% glycerol, 0.5% BSA and 0.02% sodium azide.

Recommended Dilution Ratios

WB 1:500-2000

IHC 1:50-300

ELISA 1:2000-20000

Basic Information

Clonality Polyclonal

Immunogen Information

Immunogen Synthesized peptide derived from PC-PLD2 . at AA range: 110-190

Specificity PC-PLD2 Polyclonal Antibody detects endogenous levels of PC-PLD2 protein.

Target Information

Gene name PLD2

Protein Name

Phospholipase D2

| Organism | Gene ID | UniProt ID |
|----------|-------------------------|--------------------------|
| Human | 5338 ; | O14939 ; |
| Mouse | 18806 ; | P97813 ; |
| Rat | 25097 ; | P70498 ; |

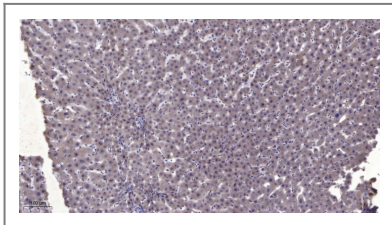
Cellular Localization

Cell membrane ; Lipid-anchor .

Tissue specificity Ubiquitous.**Function**

Catalytic activity:A phosphatidylcholine + H(2)O = choline + a phosphatidate.,enzyme regulation:Stimulated by phosphatidylinositol 4,5-bisphosphate and activated by the ADP-ribosylation factor-1 (ARF-1).,Function:May have a role in signal-induced cytoskeletal regulation and/or endocytosis.,online information:Phospholipase D entry,similarity:Belongs to the phospholipase D family.,similarity:Contains 1 PH domain.,similarity:Contains 1 PX (phox homology) domain.,similarity:Contains 2 PLD phosphodiesterase domains.,subunit:Interacts with EGFR (By similarity). Interacts with PIP5K1A.,tissue specificity:Ubiquitous.,

Validation Data



Immunohistochemical analysis of paraffin-embedded human liver cancer. 1, Antibody was diluted at 1:200(4° overnight). 2, Tris-EDTA,pH9.0 was used for antigen retrieval. 3,Secondary antibody was diluted at 1:200(room temperature, 45min).

Contact information

Orders: order@immunoway.com
Support: tech@immunoway.com
Telephone: 877-594-3616 (Toll Free), 408-747-0185
Website: <http://www.immunoway.com>
Address: 2200 Ringwood Ave San Jose, CA 95131 USA



Please scan the QR code to access additional product information:
PC-PLD2 Rabbit pAb