

PABP3 Rabbit pAb

CatalogNo: YT3563

Key Features

Host Species

- Rabbit

Reactivity

- Human

Applications

- WB,IHC,IF,ELISA

MW

- 70kD (Observed)

Isotype

- IgG

Storage

Storage*

-15°C to -25°C/1 year(Do not lower than -25°C)

Formulation

Liquid in PBS containing 50% glycerol, 0.5% BSA and 0.02% sodium azide.

Recommended Dilution Ratios

WB 1:500-1:2000

IHC:1:50-300

ELISA 1:20000

IF 1:50-200

Basic Information

Clonality

Polyclonal

Immunogen Information

Immunogen

The antiserum was produced against synthesized peptide derived from human PABPC3.
AA range:352-401

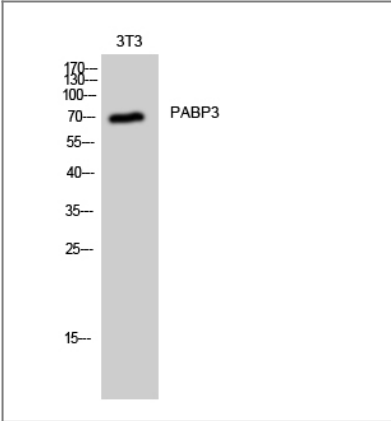
Specificity

PABP3 Polyclonal Antibody detects endogenous levels of PABP3 protein.

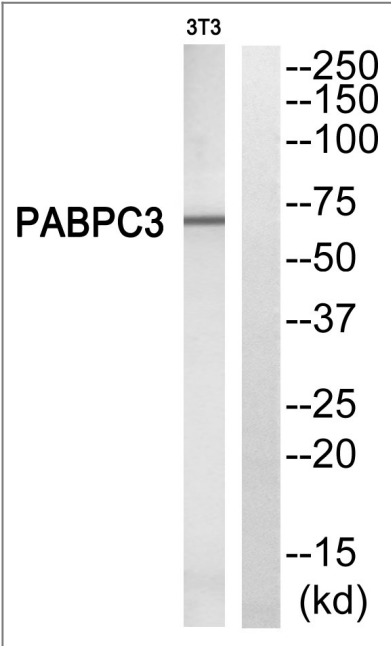
Target Information

Gene name	PABPC3		
Protein Name	Polyadenylate-binding protein 3		
	Organism	Gene ID	UniProt ID
	Human	5042;	Q9H361;
Cellular Localization	Cytoplasm .		
Tissue specificity	Testis specific.		
Function	Function: Binds the poly(A) tail of mRNA. May be involved in cytoplasmic regulatory processes of mRNA metabolism. Binds poly(A) with a slightly lower affinity as compared to PABPC1., similarity: Belongs to the polyadenylate-binding protein type-1 family., similarity: Contains 1 PABC domain., similarity: Contains 4 RRM (RNA recognition motif) domains., tissue specificity: Testis specific.,		

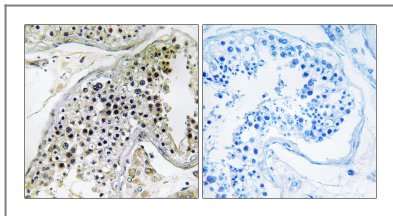
Validation Data



Western Blot analysis of 3T3 cells using PABP3 Polyclonal Antibody



Western blot analysis of PABPC3 Antibody. The lane on the right is blocked with the PABPC3 peptide.



Immunohistochemistry analysis of paraffin-embedded human testis, using PABPC3 Antibody. The lane on the right is blocked with the PABPC3 peptide.

| Contact information

Orders: order@immunoway.com
Support: tech@immunoway.com
Telephone: 877-594-3616 (Toll Free), 408-747-0185
Website: <http://www.immunoway.com>
Address: 2200 Ringwood Ave San Jose, CA 95131 USA



Please scan the QR code to access additional product information:

PABP3 Rabbit pAb

For Research Use Only. Not for Use in Diagnostic Procedures.

[Antibody](#) | [ELISA Kits](#) | [Protein](#) | [Reagents](#)