

## p18 Rabbit pAb

CatalogNo: YT3495

### Key Features

#### Host Species

- Rabbit

#### Reactivity

- Human, Mouse, Monkey

#### Applications

- WB, IHC, IF, ELISA

#### MW

- 18kD (Observed)

#### Isotype

- IgG

### Storage

**Storage\*** -15°C to -25°C/1 year (Do not lower than -25°C)

**Formulation** Liquid in PBS containing 50% glycerol, 0.5% BSA and 0.02% sodium azide.

### Recommended Dilution Ratios

**WB 1:500-1:2000**

**IHC 1:100-1:300**

**ELISA 1:20000**

**IF 1:50-200**

### Basic Information

**Clonality** Polyclonal

### Immunogen Information

**Immunogen** The antiserum was produced against synthesized peptide derived from human p18 INK. AA range:111-160

**Specificity** p18 Polyclonal Antibody detects endogenous levels of p18 protein.

### Target Information

**Gene name** CDKN2C  
**Protein Name** Cyclin-dependent kinase 4 inhibitor C

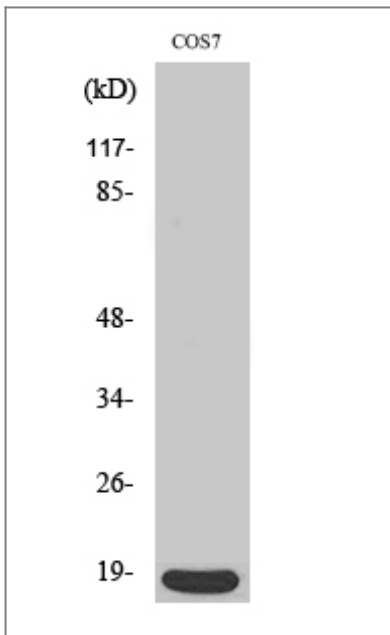
Organism	Gene ID	UniProt ID
Human	<a href="#">1031</a> ;	<a href="#">P42773</a> ;
Mouse	<a href="#">12580</a> ;	<a href="#">Q60772</a> ;

**Cellular Localization** nucleus,cytoplasm,cytosol,

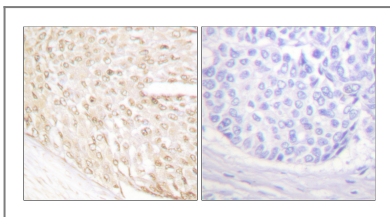
**Tissue specificity** Highest levels found in skeletal muscle. Also found in pancreas and heart.

**Function** Disease:Defects in CDKN2C are involved in tumor formation.,Function:Interacts strongly with CDK6, weakly with CDK4. Inhibits cell growth and proliferation with a correlated dependence on endogenous retinoblastoma protein RB.,similarity:Belongs to the CDKN2 cyclin-dependent kinase inhibitor family.,similarity:Contains 4 ANK repeats.,subunit:Heterodimer of p18 with CDK6.,tissue specificity:Highest levels found in skeletal muscle. Also found in pancreas and heart.,

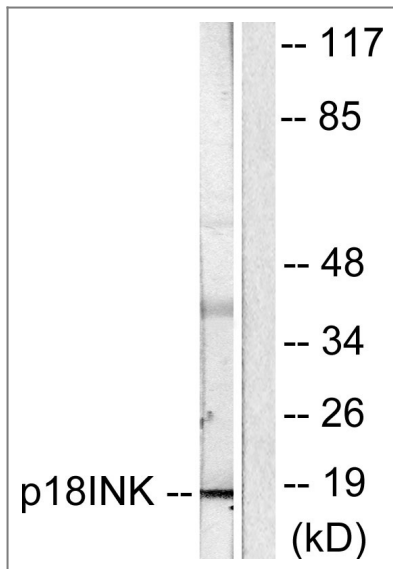
## Validation Data



Western Blot analysis of various cells using p18 Polyclonal Antibody



Immunohistochemistry analysis of paraffin-embedded human breast carcinoma tissue, using p18 INK Antibody. The picture on the right is blocked with the synthesized peptide.



Western blot analysis of lysates from COS7 cells, using p18 INK Antibody. The lane on the right is blocked with the synthesized peptide.

## Contact information

Orders: [order@immunoway.com](mailto:order@immunoway.com)  
Support: [tech@immunoway.com](mailto:tech@immunoway.com)  
Telephone: 877-594-3616 (Toll Free), 408-747-0185  
Website: <http://www.immunoway.com>  
Address: 2200 Ringwood Ave San Jose, CA 95131 USA



Please scan the QR code to access additional product information:  
**p18 Rabbit pAb**

For Research Use Only. Not for Use in Diagnostic Procedures.

[Antibody](#) | [ELISA Kits](#) | [Protein](#) | [Reagents](#)