

## OY-TES-1 Rabbit pAb

CatalogNo: YT3483

### Key Features

#### Host Species

- Rabbit

#### Reactivity

- Human, Mouse, Rat

#### Applications

- WB, IHC, IF, ELISA

#### MW

- 61kD (Observed)

#### Isotype

- IgG

### Storage

**Storage\*** -15°C to -25°C/1 year (Do not lower than -25°C)

**Formulation** Liquid in PBS containing 50% glycerol, 0.5% BSA and 0.02% sodium azide.

### Recommended Dilution Ratios

**WB 1:500-1:2000**

**IHC 1:100-1:300**

**IF 1:200-1:1000**

**ELISA 1:10000**

**Not yet tested in other applications.**

### Basic Information

**Clonality** Polyclonal

### Immunogen Information

**Immunogen** The antiserum was produced against synthesized peptide derived from human ACRBP. AA range:181-230

**Specificity** OY-TES-1 Polyclonal Antibody detects endogenous levels of OY-TES-1 protein.

## Target Information

**Gene name** ACRBP

**Protein Name** Acrosin-binding protein

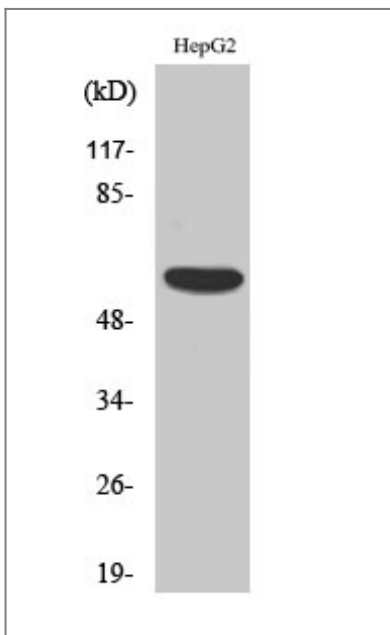
Organism	Gene ID	UniProt ID
Human	<a href="#">84519</a> ;	<a href="#">Q8NEB7</a> ;
Mouse		<a href="#">Q3V140</a> ;

**Cellular Localization** Secreted . Cytoplasmic vesicle, secretory vesicle, acrosome .

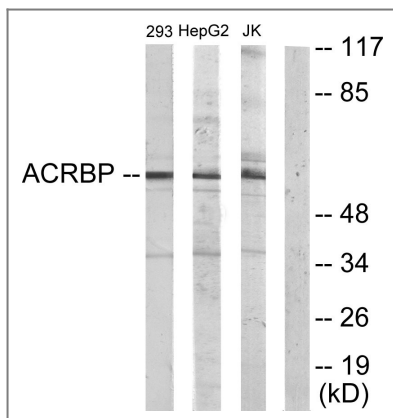
**Tissue specificity** Expression restricted to testis in normal tissue. Expressed in a wide spectrum of cancers, including bladder, breast, liver, lung and colon cancers.

**Function** Function:May be involved in packaging and condensation of the acrosin zymogen in the acrosomal matrix via its association with proacrosin.,PTM:Phosphorylated on Tyr residues in capacitated sperm.,PTM:The N-terminus is blocked.,subcellular location:Colocalizes with proacrosin in the acrosome of sperm.,subunit:Binds proacrosin.,tissue specificity:Expression restricted to testis in normal tissue. Expressed in a wide spectrum of cancers, including bladder, breast, liver, lung and colon cancers.,

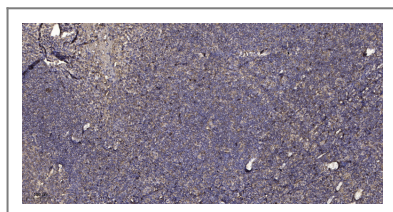
## Validation Data



Western Blot analysis of various cells using OY-TES-1 Polyclonal Antibody



Western blot analysis of lysates from HepG2, Jurkat, and 293 cells, using ACRBP Antibody. The lane on the right is blocked with the synthesized peptide.



Immunohistochemical analysis of paraffin-embedded human tonsil. 1, Antibody was diluted at 1:200(4° overnight). 2, Tris-EDTA,pH9.0 was used for antigen retrieval. 3,Secondary antibody was diluted at 1:200(room temperature, 30min).

## Contact information

Orders: [order@immunoway.com](mailto:order@immunoway.com)  
 Support: [tech@immunoway.com](mailto:tech@immunoway.com)  
 Telephone: 877-594-3616 (Toll Free), 408-747-0185  
 Website: <http://www.immunoway.com>  
 Address: 2200 Ringwood Ave San Jose, CA 95131 USA



Please scan the QR code to access additional product information:  
**OY-TES-1 Rabbit pAb**

For Research Use Only. Not for Use in Diagnostic Procedures.

[Antibody](#) | [ELISA Kits](#) | [Protein](#) | [Reagents](#)