

## NTR1 Rabbit pAb

CatalogNo: YT3203

### Key Features

#### Host Species

- Rabbit

#### Reactivity

- Human, Mouse

#### Applications

- WB, IHC, IF, ELISA

#### MW

- 46kD (Observed)

#### Isotype

- IgG

### Storage

#### Storage\*

-15°C to -25°C/1 year (Do not lower than -25°C)

#### Formulation

Liquid in PBS containing 50% glycerol, 0.5% BSA and 0.02% sodium azide.

### Recommended Dilution Ratios

**WB 1:500-1:2000**

**IHC 1:100-1:300**

**IF 1:200-1:1000**

**ELISA 1:5000**

**Not yet tested in other applications.**

### Basic Information

#### Clonality

Polyclonal

### Immunogen Information

#### Immunogen

The antiserum was produced against synthesized peptide derived from human NTR1. AA range: 181-230

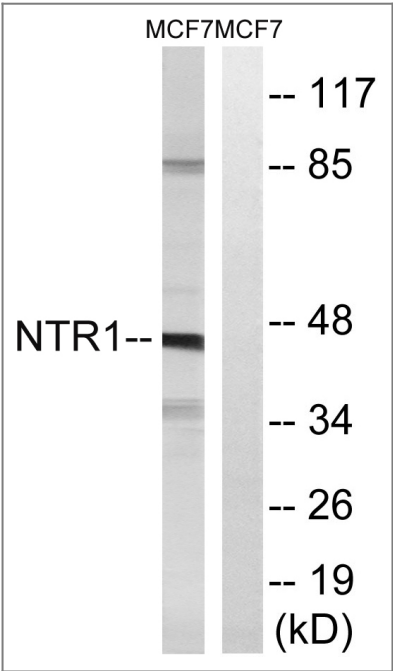
#### Specificity

NTR1 Polyclonal Antibody detects endogenous levels of NTR1 protein.

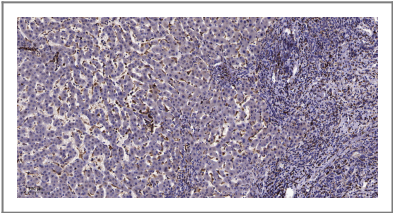
## Target Information

Gene name	NTSR1		
Protein Name	Neurotensin receptor type 1		
	Organism	Gene ID	UniProt ID
	Human	<a href="#">4923</a> ;	<a href="#">P30989</a> ;
	Mouse	<a href="#">18216</a> ;	<a href="#">O88319</a> ;
Cellular Localization	Cell membrane ; Multi-pass membrane protein . Membrane raft . Palmitoylation is required for localization at CAV1-enriched membrane rafts. .		
Tissue specificity	Expressed in prostate (at protein level). Detected in colon and peripheral blood mononuclear cells. Detected at very low levels in brain.		
Function	Function:Receptor for the tridecapeptide neurotensin. It is associated with G proteins that activate a phosphatidylinositol-calcium second messenger system.,online information:Neurotensin receptor entry,similarity:Belongs to the G-protein coupled receptor 1 family.,		

## Validation Data



Western blot analysis of lysates from MCF7 cells, using NTR1 Antibody. The lane on the right is blocked with the synthesized peptide.



Immunohistochemical analysis of paraffin-embedded human liver cancer. 1, Antibody was diluted at 1:200(4° overnight). 2, Tris-EDTA,pH9.0 was used for antigen retrieval. 3,Secondary antibody was diluted at 1:200(room temperature, 45min).

## | Contact information

Orders: order@immunoway.com  
Support: tech@immunoway.com  
Telephone: 877-594-3616 (Toll Free), 408-747-0185  
Website: <http://www.immunoway.com>  
Address: 2200 Ringwood Ave San Jose, CA 95131 USA



Please scan the QR code  
to access additional  
product information:  
**NTR1 Rabbit pAb**

---

For Research Use Only. Not for Use in Diagnostic Procedures.

[Antibody](#) | [ELISA Kits](#) | [Protein](#) | [Reagents](#)