

Nrf3 Rabbit pAb

CatalogNo: YT3190

Key Features

Host Species

- Rabbit

Reactivity

- Human, Mouse

Applications

- WB, ELISA

MW

- 75kD (Observed)

Isotype

- IgG

Storage

Storage* -15°C to -25°C/1 year (Do not lower than -25°C)

Formulation Liquid in PBS containing 50% glycerol, 0.5% BSA and 0.02% sodium azide.

Recommended Dilution Ratios

WB 1:500-1:2000

ELISA 1:10000

Not yet tested in other applications.

Basic Information

Clonality Polyclonal

Immunogen Information

Immunogen The antiserum was produced against synthesized peptide derived from human NFE2L3. AA range:491-540

Specificity Nrf3 Polyclonal Antibody detects endogenous levels of Nrf3 protein.

Target Information

Gene name NFE2L3

Protein Name Nuclear factor erythroid 2-related factor 3

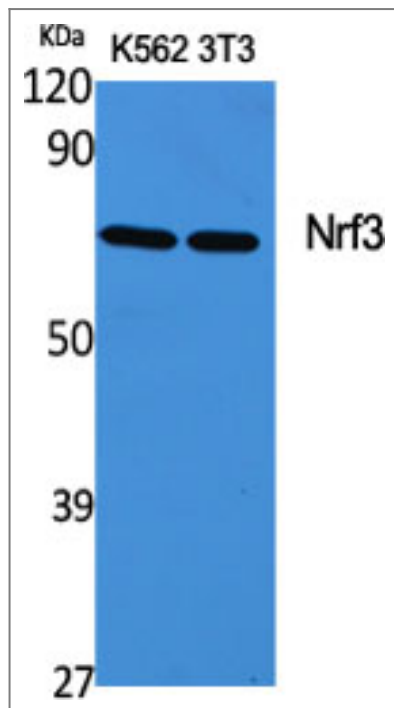
Organism	Gene ID	UniProt ID
Human	9603 ;	Q9Y4A8 ;
Mouse		Q9WTM4 ;

Cellular Localization Nucleus .

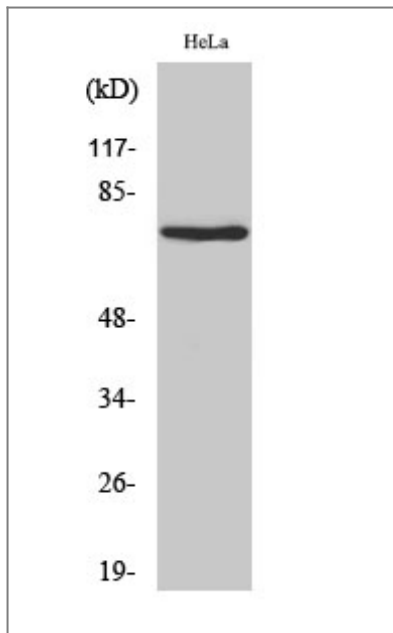
Tissue specificity Highly expressed in human placenta and also in B-cell and monocyte cell lines. Low expression in heart, brain, lung, skeletal muscle, kidney and pancreas.

Function Function:Activates erythroid-specific, globin gene expression.,similarity:Belongs to the bZIP family.,similarity:Belongs to the bZIP family. CNC subfamily.,similarity:Contains 1 bZIP domain.,subunit:Heterodimer with MAFG, MAFK and other small MAF proteins that binds to the MAF recognition elements (MARE).,tissue specificity:Highly expressed in human placenta and also in B-cell and monocyte cell lines. Low expression in heart, brain, lung, skeletal muscle, kidney and pancreas.,

Validation Data



Western Blot analysis of various cells using Nrf3 Polyclonal Antibody cells nucleus extracted by Minute TM Cytoplasmic and Nuclear Fractionation kit (SC-003, Invent biotech, MN, USA).



Western Blot analysis of HeLa cells using Nrf3 Polyclonal Antibody cells nucleus extracted by Minute TM Cytoplasmic and Nuclear Fractionation kit (SC-003, Inventbiotech, MN, USA).

Contact information

Orders: order@immunoway.com
Support: tech@immunoway.com
Telephone: 877-594-3616 (Toll Free), 408-747-0185
Website: <http://www.immunoway.com>
Address: 2200 Ringwood Ave San Jose, CA 95131 USA



Please scan the QR code to access additional product information:
Nrf3 Rabbit pAb

For Research Use Only. Not for Use in Diagnostic Procedures.

[Antibody](#) | [ELISA Kits](#) | [Protein](#) | [Reagents](#)