

Nkx-2.8 Rabbit pAb

CatalogNo: YT3141

Key Features

Host Species

- Rabbit

Reactivity

- Human, Mouse, Rat

Applications

- WB, ELISA

MW

- 26kD (Observed)

Isotype

- IgG

Storage

Storage* -15°C to -25°C/1 year (Do not lower than -25°C)

Formulation Liquid in PBS containing 50% glycerol, 0.5% BSA and 0.02% sodium azide.

Recommended Dilution Ratios

WB 1:500-1:2000

ELISA 1:40000

Not yet tested in other applications.

Basic Information

Clonality Polyclonal

Immunogen Information

Immunogen The antiserum was produced against synthesized peptide derived from human NKX28. AA range:20-69

Specificity Nkx-2.8 Polyclonal Antibody detects endogenous levels of Nkx-2.8 protein.

Target Information

Gene name NKX2-8

Protein Name Homeobox protein Nkx-2.8

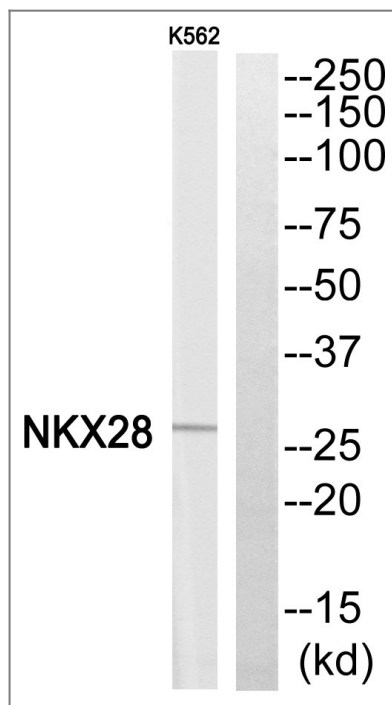
Organism	Gene ID	UniProt ID
Human	26257;	Q8IUT7;

Cellular Localization nucleus,

Tissue specificity Brain,Tongue,

Function similarity:Belongs to the NK-2 homeobox family.,similarity:Contains 1 homeobox DNA-binding domain.,

Validation Data



Western blot analysis of NKX28 Antibody. The lane on the right is blocked with the NKX28 peptide.

Contact information

Orders: order@immunoway.com
Support: tech@immunoway.com
Telephone: 877-594-3616 (Toll Free), 408-747-0185
Website: <http://www.immunoway.com>
Address: 2200 Ringwood Ave San Jose, CA 95131 USA



Please scan the QR code to access additional product information:
Nkx-2.8 Rabbit pAb

