

NAB2 Rabbit pAb

CatalogNo: YT2975

Key Features

Host Species

- Rabbit

Reactivity

- Human, Mouse

Applications

- WB, IHC, IF, ELISA

MW

- 56kD (Observed)

Isotype

- IgG

Storage

Storage* -15°C to -25°C/1 year (Do not lower than -25°C)

Formulation Liquid in PBS containing 50% glycerol, 0.5% BSA and 0.02% sodium azide.

Recommended Dilution Ratios

WB 1:500-1:2000

IHC 1:100-1:300

ELISA 1:10000

IF 1:50-200

Basic Information

Clonality Polyclonal

Immunogen Information

Immunogen The antiserum was produced against synthesized peptide derived from human NAB2. AA range: 261-310

Specificity NAB2 Polyclonal Antibody detects endogenous levels of NAB2 protein.

Target Information

Gene name NAB2

Protein Name NGFI-A-binding protein 2

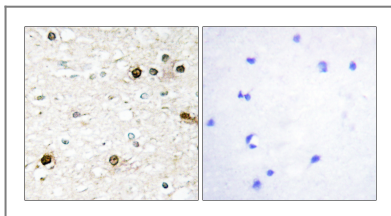
Organism	Gene ID	UniProt ID
Human	4665;	Q15742;
Mouse	17937;	Q61127;

Cellular Localization Nucleus . Isoform 2 is not localized to the nucleus. .

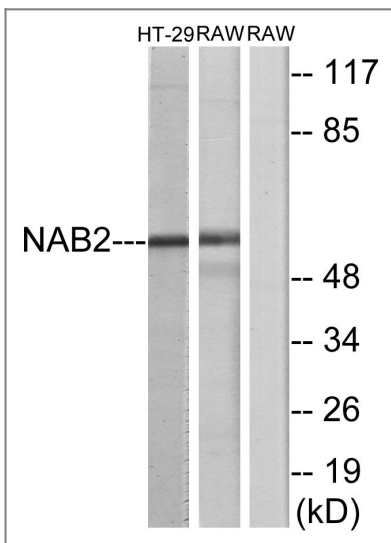
Tissue specificity Widely expressed at low levels. Highly expressed in melanoma cell lines.

Function Domain:The NAB conserved domain 1 (NCD1) interacts with EGR1 inhibitory domain and mediates multimerization.,Domain:The NAB conserved domain 2 (NCD2) is necessary for transcriptional repression.,Function:Acts as a transcriptional repressor for zinc finger transcription factors EGR1 and EGR2. Isoform 2 lacks repression ability.,induction:By serum and PMA stimulation.,similarity:Belongs to the NAB family.,subcellular location:Isoform 2 is not localized to the nucleus.,subunit:Homomultimers may associate with EGR1 bound to DNA.,tissue specificity:Widely expressed at low levels. Highly expressed in melanoma cell lines.,

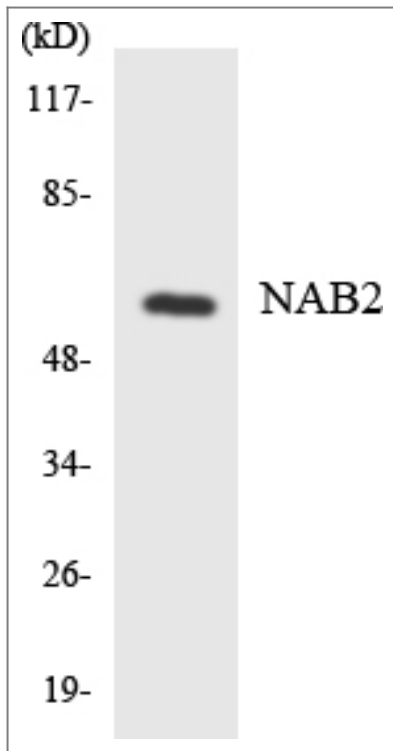
Validation Data



Immunohistochemistry analysis of paraffin-embedded human brain tissue, using NAB2 Antibody. The picture on the right is blocked with the synthesized peptide.



Western blot analysis of lysates from HT-29 and RAW264.7 cells, using NAB2 Antibody. The lane on the right is blocked with the synthesized peptide.



Western blot analysis of the lysates from HeLa cells using NAB2 antibody.

Contact information

Orders: order@immunoway.com
Support: tech@immunoway.com
Telephone: 877-594-3616 (Toll Free), 408-747-0185
Website: <http://www.immunoway.com>
Address: 2200 Ringwood Ave San Jose, CA 95131 USA



Please scan the QR code to access additional product information:
NAB2 Rabbit pAb

For Research Use Only. Not for Use in Diagnostic Procedures.

[Antibody](#) | [ELISA Kits](#) | [Protein](#) | [Reagents](#)