

Na⁺ CP type VII α Rabbit pAb

CatalogNo: YT2968

Key Features

Host Species

- Rabbit

Reactivity

- Human, Monkey

Applications

- WB, IHC, IF

MW

- 200kD (Observed)

Isotype

- IgG

Storage

Storage* -15°C to -25°C/1 year (Do not lower than -25°C)**Formulation** Liquid in PBS containing 50% glycerol, 0.5% BSA and 0.02% sodium azide.

Recommended Dilution Ratios

WB 1:500-2000**IHC 1:50-300****IF 1:200-1:1000**

Basic Information

Clonality Polyclonal

Immunogen Information

Immunogen The antiserum was produced against synthesized peptide derived from human SCN7A. AA range: 771-820**Specificity** Na⁺ CP type VII α Polyclonal Antibody detects endogenous levels of Na⁺ CP type VII α protein.

Target Information

Gene name SCN7A

Protein Name Sodium channel protein type 7 subunit alpha

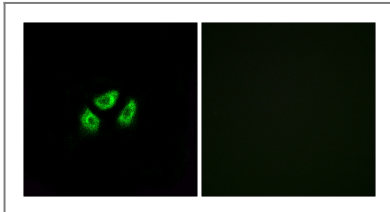
Organism	Gene ID	UniProt ID
Human	6332;	Q01118;

Cellular Localization Cell membrane ; Multi-pass membrane protein .

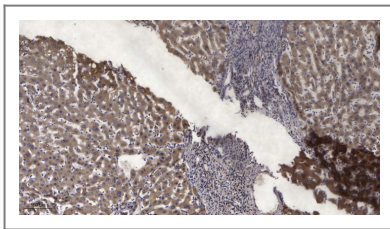
Tissue specificity Heart and uterus.

Function Domain:The sequence contains 4 internal repeats, each with 5 hydrophobic segments (S1,S2,S3,S5,S6) and one positively charged segment (S4). Segments S4 are probably the voltage-sensors and are characterized by a series of positively charged amino acids at every third position.,Function:Mediates the voltage-dependent sodium ion permeability of excitable membranes. Assuming opened or closed conformations in response to the voltage difference across the membrane, the protein forms a sodium-selective channel through which Na(+) ions may pass in accordance with their electrochemical gradient.,similarity:Belongs to the sodium channel family.,tissue specificity:Heart and uterus.,

Validation Data



Immunofluorescence analysis of A549 cells, using SCN7A Antibody. The picture on the right is blocked with the synthesized peptide.



Immunohistochemical analysis of paraffin-embedded human liver cancer. 1, Antibody was diluted at 1:200(4° overnight). 2, Tris-EDTA,pH9.0 was used for antigen retrieval. 3,Secondary antibody was diluted at 1:200(room temperature, 45min).

Contact information

Orders: order@immunoway.com
Support: tech@immunoway.com
Telephone: 877-594-3616 (Toll Free), 408-747-0185
Website: <http://www.immunoway.com>
Address: 2200 Ringwood Ave San Jose, CA 95131 USA



Please scan the QR code to access additional product information:
Na⁺ CP type VII α Rabbit pAb

