

Myp Rabbit pAb

CatalogNo: YT2953

| Key Features

Host Species

- Rabbit

Reactivity

- Human, Mouse, Rat

Applications

- WB, IHC, IF, ELISA

MW

- 28kD (Observed)

Isotype

- IgG

| Storage

Storage*

-15°C to -25°C/1 year (Do not lower than -25°C)

Formulation

Liquid in PBS containing 50% glycerol, 0.5% BSA and 0.02% sodium azide.

| Recommended Dilution Ratios

WB 1:500-1:2000

IHC 1:100-1:300

IF 1:200-1:1000

ELISA 1:20000

Not yet tested in other applications.

| Basic Information

Clonality

Polyclonal

| Immunogen Information

Immunogen

The antiserum was produced against synthesized peptide derived from human ARC. AA range: 159-208

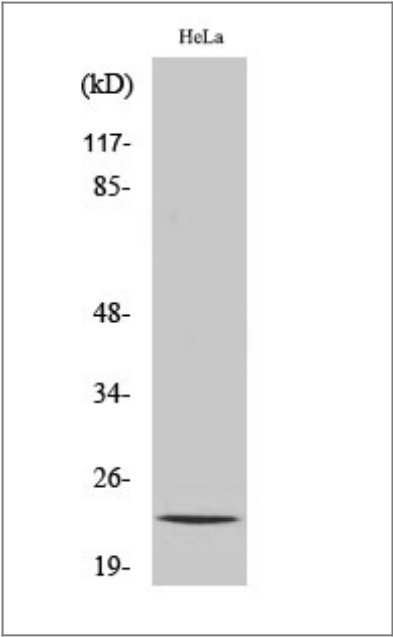
Specificity

Myp Polyclonal Antibody detects endogenous levels of Myp protein.

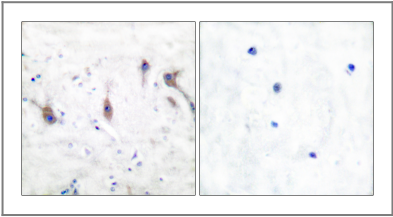
Target Information

Gene name	NOL3		
Protein Name	Nucleolar protein 3		
	Organism	Gene ID	UniProt ID
	Human	8996 ;	O60936-2 ;
Cellular Localization	[Isoform 1]: Nucleus, nucleolus . The SR-rich C-terminus mediates nuclear localization. . ; [Isoform 3]: Cytoplasm . ; [Isoform 2]: Cytoplasm . Mitochondrion . Sarcoplasmic reticulum . Membrane ; Lipid-anchor . Phosphorylation at Thr-149 results in translocation to mitochondria. Colocalized with mitochondria in response to oxidative stress. .		
Tissue specificity	Highly expressed in heart and skeletal muscle. Detected at low levels in placenta, liver, kidney and pancreas.		

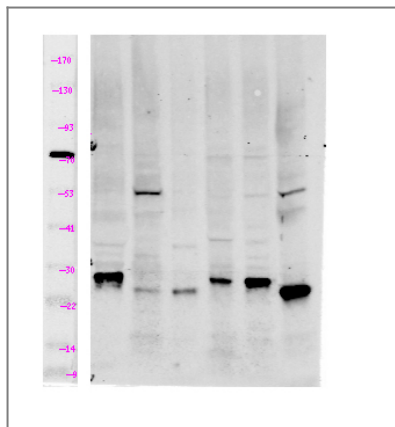
Validation Data



Western Blot analysis of various cells using Myp Polyclonal Antibody



Immunohistochemistry analysis of paraffin-embedded human brain tissue, using ARC Antibody. The picture on the right is blocked with the synthesized peptide.



Western Blot analysis of lane1 mouse-brain, lane2 mouse-kidney, lane3 Hela. lane4 MCF7, lane5 293T, lane6 mouse-muscle using primary antibody at 1:1000 dilution 4°C, overnight. Secondary antibody(catalog#:RS23920) was diluted at 1:10000 25°C, 1.5hours

Contact information

Orders: order@immunoway.com
Support: tech@immunoway.com
Telephone: 877-594-3616 (Toll Free), 408-747-0185
Website: <http://www.immunoway.com>
Address: 2200 Ringwood Ave San Jose, CA 95131 USA



Please scan the QR code to access additional product information:
Myp Rabbit pAb

For Research Use Only. Not for Use in Diagnostic Procedures.

[Antibody](#) | [ELISA Kits](#) | [Protein](#) | [Reagents](#)