

## MMP-16 Rabbit pAb

CatalogNo: YT2912

### Key Features

#### Host Species

- Rabbit

#### Reactivity

- Human, Mouse, Rat

#### Applications

- WB, IHC, IF, ELISA

#### MW

- 70kD (Observed)

#### Isotype

- IgG

### Recommended Dilution Ratios

**WB 1:500-1:2000**

**IHC 1:100-1:300**

**ELISA 1:10000**

**IF 1:50-200**

### Storage

**Storage\*** -15°C to -25°C/1 year (Do not lower than -25°C)

**Formulation** Liquid in PBS containing 50% glycerol, 0.5% BSA and 0.02% sodium azide.

### Basic Information

**Clonality** Polyclonal

### Immunogen Information

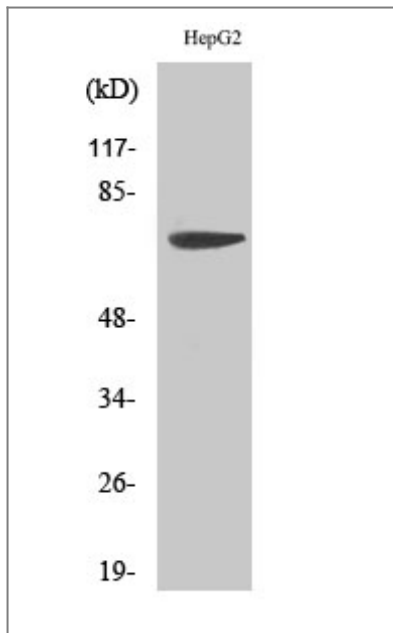
**Immunogen** The antiserum was produced against synthesized peptide derived from human MMP-16. AA range: 551-600

**Specificity** MMP-16 Polyclonal Antibody detects endogenous levels of MMP-16 protein.

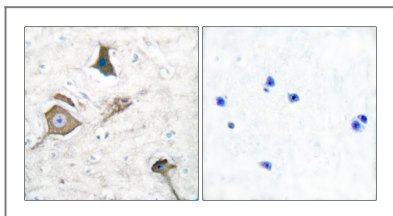
### Target Information

Gene name	MMP16		
Protein Name	Matrix metalloproteinase-16		
	Organism	Gene ID	UniProt ID
	Human	<a href="#">4325;</a>	<a href="#">P51512;</a>
	Mouse	<a href="#">17389;</a>	<a href="#">Q9WTR0;</a>
	Rat	<a href="#">65205;</a>	<a href="#">O35548;</a>
Cellular Localization	[Isoform Long]: Cell membrane ; Single-pass type I membrane protein ; Extracellular side . Localized at the cell surface of melanoma cells.; [Isoform Short]: Secreted, extracellular space, extracellular matrix. Cell surface. Localized at the cell surface of melanoma cells.		
Tissue specificity	Expressed in heart, brain, placenta, ovary and small intestine. Isoform Short is found in the ovary.		
Function	cofactor:Binds 1 zinc ion per subunit.,cofactor:Calcium.,developmental stage:Expressed in tissues undergoing reconstruction. Present in fetal tissues, especially in brain. Expression seems to decline with advanced development.,Domain:The conserved cysteine present in the cysteine-switch motif binds the catalytic zinc ion, thus inhibiting the enzyme. The dissociation of the cysteine from the zinc ion upon the activation-peptide release activates the enzyme.,enzyme regulation:TIMP-2 shows little inhibitory activity compared to TIMP-1. TIMP-1 seems to have less binding affinity than TIMP-2 for the short isoform.,Function:Endopeptidase that degrades various components of the extracellular matrix, such as collagen type III and fibronectin. Activates progelatinase A. Involved in the matrix remodeling of blood vessels. The short isoform cleaves fibronectin and also collagen type III, but at lower rate. It has no effect on type I, II, IV and V collagen. However, upon interaction with CSPG4, it may be involved in degradation and invasion of type I collagen by melanoma cells.,PTM:The precursor is cleaved by a furin endopeptidase.,similarity:Belongs to the peptidase M10A family.,similarity:Contains 4 hemopexin-like domains.,subcellular location:Localized at the cell surface of melanoma cells.,subunit:Interacts with CSPG4 through CSPG4 chondroitin sulfate glycosaminoglycan.,tissue specificity:Expressed in heart, brain, placenta, ovary and small intestine. The short isoform is found in the ovary.,		

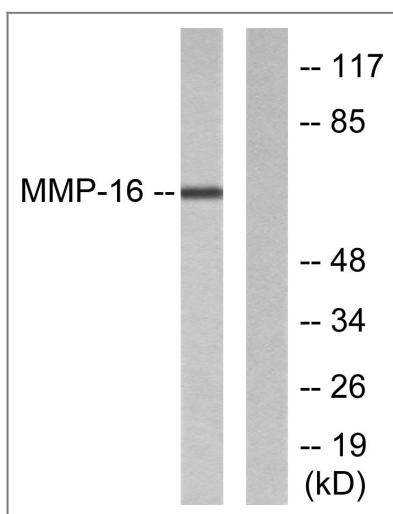
| Validation Data



Western Blot analysis of various cells using MMP-16 Polyclonal Antibody diluted at 1:500



Immunohistochemistry analysis of paraffin-embedded human brain tissue, using MMP-16 Antibody. The picture on the right is blocked with the synthesized peptide.



Western blot analysis of lysates from HepG2 cells, using MMP-16 Antibody. The lane on the right is blocked with the synthesized peptide.

## Contact information

Orders: [order@immunoway.com](mailto:order@immunoway.com)  
 Support: [tech@immunoway.com](mailto:tech@immunoway.com)  
 Telephone: 877-594-3616 (Toll Free), 408-747-0185  
 Website: <http://www.immunoway.com>  
 Address: 2200 Ringwood Ave San Jose, CA 95131 USA



Please scan the QR code  
 to access additional  
 product information:  
**MMP-16 Rabbit pAb**

