

MRP-L3 Rabbit pAb

CatalogNo: YT2856

Key Features

Host Species

- Rabbit

Reactivity

- Human, Mouse, Rat

Applications

- WB, ELISA, IHC

MW

- 38kD (Observed)

Isotype

- IgG

Storage

Storage* -15°C to -25°C/1 year (Do not lower than -25°C)**Formulation** Liquid in PBS containing 50% glycerol, 0.5% BSA and 0.02% sodium azide.

Recommended Dilution Ratios

WB 1:500-2000**IHC 1:50-300****ELISA 1:2000-20000**

Basic Information

Clonality Polyclonal

Immunogen Information

Immunogen Synthesized peptide derived from MRP-L3 . at AA range: 20-100**Specificity** MRP-L3 Polyclonal Antibody detects endogenous levels of MRP-L3 protein.

Target Information

Gene name MRPL3

Protein Name 39S ribosomal protein L3 mitochondrial

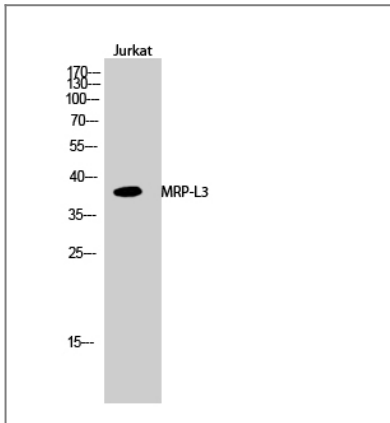
Organism	Gene ID	UniProt ID
Human	11222;	P09001;
Mouse		Q99N95;

Cellular Localization Mitochondrion .

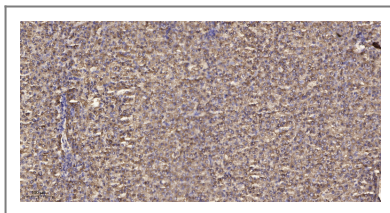
Tissue specificity Cervix,

Function similarity:Belongs to the ribosomal protein L3P family.,

Validation Data



Western Blot analysis of Jurkat cells using MRP-L3 Polyclonal Antibody



Immunohistochemical analysis of paraffin-embedded human liver cancer. 1, Antibody was diluted at 1:200(4° overnight). 2, Tris-EDTA,pH9.0 was used for antigen retrieval. 3,Secondary antibody was diluted at 1:200(room temperature, 45min).

Contact information

Orders: order@immunoway.com
Support: tech@immunoway.com
Telephone: 877-594-3616 (Toll Free), 408-747-0185
Website: <http://www.immunoway.com>
Address: 2200 Ringwood Ave San Jose, CA 95131 USA



Please scan the QR code to access additional product information:
MRP-L3 Rabbit pAb

