

MNK2 Rabbit pAb

CatalogNo: YT2808

Key Features

Host Species

- Rabbit

Reactivity

- Human, Mouse, Rat

Applications

- WB, ELISA, IHC

MW

- 51kD (Observed)

Isotype

- IgG

Storage

Storage* -15°C to -25°C/1 year (Do not lower than -25°C)

Formulation Liquid in PBS containing 50% glycerol, 0.5% BSA and 0.02% sodium azide.

Recommended Dilution Ratios

WB 1:500-2000

IHC 1:50-300

ELISA 1:2000-20000

Basic Information

Clonality Polyclonal

Immunogen Information

Immunogen Synthesized peptide derived from the Internal region of human Mnk2.

Specificity Mnk2 Polyclonal Antibody detects endogenous levels of Mnk2 protein.

Target Information

Gene name MKNK2 GPRK7 MNK2

Protein Name MAP kinase-interacting serine/threonine-protein kinase 2

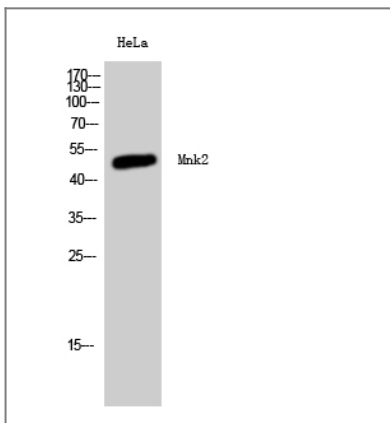
Organism	Gene ID	UniProt ID
Human	2872 ;	Q9HBH9 ;
Mouse	17347 ;	Q8CDB0 ;
Rat	299618 ;	Q5U2N4 ;

Cellular Localization [Isoform 2]: Nucleus, PML body.; [Isoform 1]: Cytoplasm.

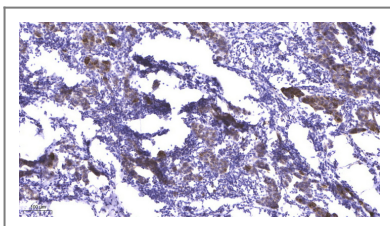
Tissue specificity Ubiquitously expressed in all tissues examined. Isoform 2 is expressed at higher levels in the ovary than is isoform 1.

Function Catalytic activity:ATP + a protein = ADP + a phosphoprotein.,cofactor:Binds 1 zinc ion per subunit.,cofactor:Magnesium.,Function:May play a role in the response to environmental stress and cytokines. Appears to regulate transcription by phosphorylating EIF4E, thus increasing the affinity of this protein for the 7-methylguanosine-containing mRNA cap.,PTM: Dual phosphorylation of Thr-244 and Thr-249 activates the kinase. Phosphorylation of Thr-379 activates the kinase.,similarity:Belongs to the protein kinase superfamily. CAMK Ser/Thr protein kinase family.,similarity:Contains 1 protein kinase domain.,subunit:Monomer. Interacts with the C-terminal regions of EIF4G1 and EIF4G2. Also binds to dephosphorylated ERK1 and ERK2. Isoform 2 interacts with ESR2.,tissue specificity:Ubiquitously expressed in all tissues examined. Isoform 2 is expressed at higher levels in the ovary than is isoform 1.,

Validation Data



Western Blot analysis of HeLa cells using Mnk2 Polyclonal Antibody



Immunohistochemical analysis of paraffin-embedded human Breast cancer. 1, Antibody was diluted at 1:200(4° overnight). 2, Tris-EDTA,pH9.0 was used for antigen retrieval. 3,Secondary antibody was diluted at 1:200(room temperature, 45min).

| Contact information

Orders: order@immunoway.com
Support: tech@immunoway.com
Telephone: 877-594-3616 (Toll Free), 408-747-0185
Website: <http://www.immunoway.com>
Address: 2200 Ringwood Ave San Jose, CA 95131 USA



Please scan the QR code
to access additional
product information:
MNK2 Rabbit pAb

For Research Use Only. Not for Use in Diagnostic Procedures.

[Antibody](#) | [ELISA Kits](#) | [Protein](#) | [Reagents](#)