

## MMP-19 Rabbit pAb

CatalogNo: YT2797

### Key Features

#### Host Species

- Rabbit

#### Reactivity

- Human, Mouse

#### Applications

- WB, IHC, IF, ELISA

#### MW

- 57kD (Observed)

#### Isotype

- IgG

### Recommended Dilution Ratios

**WB 1:500-1:2000**

**IHC 1:100-1:300**

**ELISA 1:10000**

**IF 1:50-200**

### Storage

#### Storage\*

-15°C to -25°C/1 year (Do not lower than -25°C)

#### Formulation

Liquid in PBS containing 50% glycerol, 0.5% BSA and 0.02% sodium azide.

### Basic Information

#### Clonality

Polyclonal

### Immunogen Information

#### Immunogen

The antiserum was produced against synthesized peptide derived from human MMP-19. AA range: 11-60

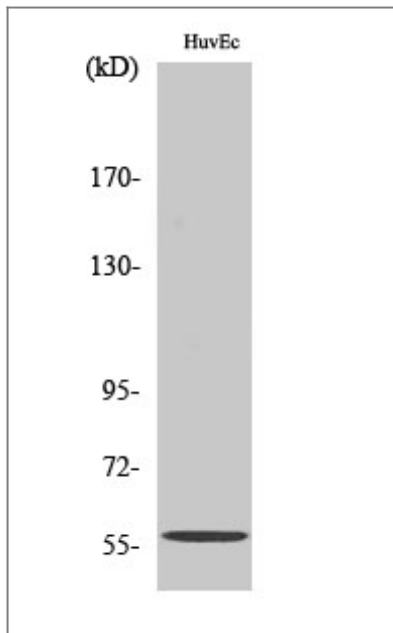
#### Specificity

MMP-19 Polyclonal Antibody detects endogenous levels of MMP-19 protein.

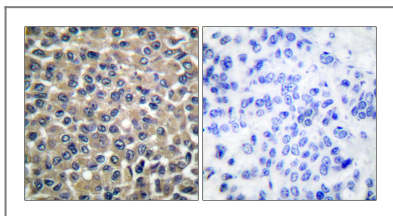
### Target Information

Gene name	MMP19		
Protein Name	Matrix metalloproteinase-19		
	Organism	Gene ID	UniProt ID
	Human	<a href="#">4327</a> ;	<a href="#">Q99542</a> ;
	Mouse	<a href="#">58223</a> ;	<a href="#">Q9JHI0</a> ;
Cellular Localization	Secreted, extracellular space, extracellular matrix .		
Tissue specificity	Expressed in mammary gland, placenta, lung, pancreas, ovary, small intestine, spleen, thymus, prostate, testis colon, heart and blood vessel walls. Not detected in brain and peripheral blood leukocytes. Also expressed in the synovial fluid of normal and rheumatoid patients (PubMed:8920941).		
Function	Alternative products:Additional isoforms seem to exist,Catalytic activity:Cleaves aggrecan at the 360-Ser- -Phe-361 site.,cofactor:Binds 1 zinc ion per subunit.,cofactor:Calcium.,Disease:May play a role in pathological processes participating in rheumatoid arthritis (RA)-associated joint tissue destruction. Autoantigen anti-MMP19 are frequent in RA patients.,Domain:The conserved cysteine present in the cysteine-switch motif binds the catalytic zinc ion, thus inhibiting the enzyme. The dissociation of the cysteine from the zinc ion upon the activation-peptide release activates the enzyme.,enzyme regulation:Strongly inhibited by TIMP-2, TIMP-3 and TIMP-4, while TIMP-1 is less efficient.,Function:Endopeptidase that degrades various components of the extracellular matrix, such as aggrecan and cartilage oligomeric matrix protein (comp), during development, haemostasis and pathological conditions (arthritic disease). May also play a role in neovascularization or angiogenesis. Hydrolyzes collagen type IV, laminin, nidogen, nascin-C isoform, fibronectin, and type I gelatin.,PTM:Activated by autolytic cleavage after Lys-97.,similarity:Belongs to the peptidase M10A family.,similarity:Contains 4 hemopexin-like domains.,tissue specificity:Expressed in mammary gland, placenta, lung, pancreas, ovary, small intestine, spleen, thymus, prostate, testis colon, heart and blood vessel walls. Not detected in brain and peripheral blood leukocytes. Also expressed in the synovial fluid of normal and rheumatoid patients.,		

| Validation Data



Western Blot analysis of various cells using MMP-19 Polyclonal Antibody diluted at 1:500



Immunohistochemistry analysis of paraffin-embedded human breast carcinoma tissue, using MMP-19 Antibody. The picture on the right is blocked with the synthesized peptide.

## Contact information

Orders: [order@immunoway.com](mailto:order@immunoway.com)  
 Support: [tech@immunoway.com](mailto:tech@immunoway.com)  
 Telephone: 877-594-3616 (Toll Free), 408-747-0185  
 Website: <http://www.immunoway.com>  
 Address: 2200 Ringwood Ave San Jose, CA 95131 USA



Please scan the QR code to access additional product information:  
**MMP-19 Rabbit pAb**

For Research Use Only. Not for Use in Diagnostic Procedures.

[Antibody](#) | [ELISA Kits](#) | [Protein](#) | [Reagents](#)