

MKP-7 Rabbit pAb

CatalogNo: YT2777

Key Features

Host Species

- Rabbit

Reactivity

- Human, Mouse

Applications

- WB, IHC, IF, ELISA

MW

- 73kD (Observed)

Isotype

- IgG

Storage

Storage* -15°C to -25°C/1 year (Do not lower than -25°C)

Formulation Liquid in PBS containing 50% glycerol, 0.5% BSA and 0.02% sodium azide.

Recommended Dilution Ratios

WB 1:500-1:2000

IHC 1:100-1:300

IF 1:200-1:1000

ELISA 1:10000

Not yet tested in other applications.

Basic Information

Clonality Polyclonal

Immunogen Information

Immunogen The antiserum was produced against synthesized peptide derived from human DUSP16. AA range: 571-620

Specificity MKP-7 Polyclonal Antibody detects endogenous levels of MKP-7 protein.

Target Information

Gene name DUSP16

Protein Name Dual specificity protein phosphatase 16

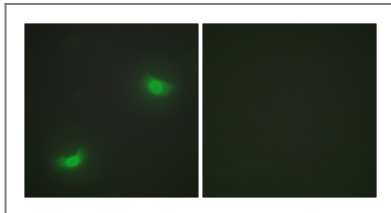
Organism	Gene ID	UniProt ID
Human	80824 ;	Q9BY84 ;

Cellular Localization Cytoplasm. Nucleus. Cytoplasmic vesicle. After dissociation upon AGTR stimulation, re-associates with ARRB2 on endocytic vesicles.

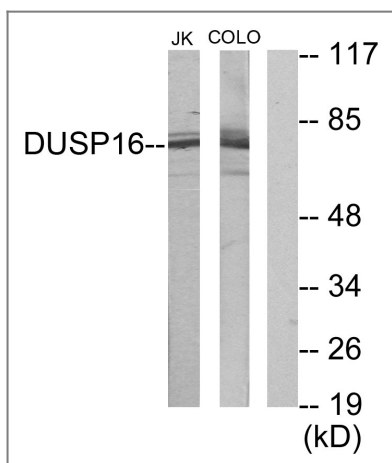
Tissue specificity Bone marrow,Brain,Duodenum,PCR rescued clones,

Function Catalytic activity:A phosphoprotein + H(2)O = a protein + phosphate.,Catalytic activity:Protein tyrosine phosphate + H(2)O = protein tyrosine + phosphate.,Function:Involved in the inactivation of MAP kinases.,similarity:Belongs to the protein-tyrosine phosphatase family. Non-receptor class dual specificity subfamily.,similarity:Contains 1 rhodanese domain.,similarity:Contains 1 tyrosine-protein phosphatase domain.,

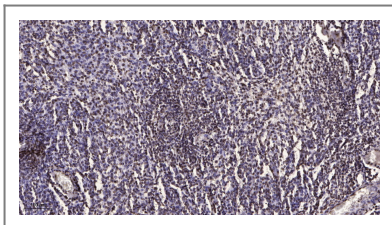
Validation Data



Immunofluorescence analysis of HepG2 cells, using DUSP16 Antibody. The picture on the right is blocked with the synthesized peptide.



Western blot analysis of lysates from Jurkat and COLO205 cells, using DUSP16 Antibody. The lane on the right is blocked with the synthesized peptide.



Immunohistochemical analysis of paraffin-embedded human brain tumor. 1, Antibody was diluted at 1:200(4° overnight). 2, Tris-EDTA,pH9.0 was used for antigen retrieval. 3,Secondary antibody was diluted at 1:200(room temperature, 45min).

| Contact information

Orders: order@immunoway.com
Support: tech@immunoway.com
Telephone: 877-594-3616 (Toll Free), 408-747-0185
Website: <http://www.immunoway.com>
Address: 2200 Ringwood Ave San Jose, CA 95131 USA



Please scan the QR code to access additional product information:
MKP-7 Rabbit pAb

For Research Use Only. Not for Use in Diagnostic Procedures.

[Antibody](#) | [ELISA Kits](#) | [Protein](#) | [Reagents](#)